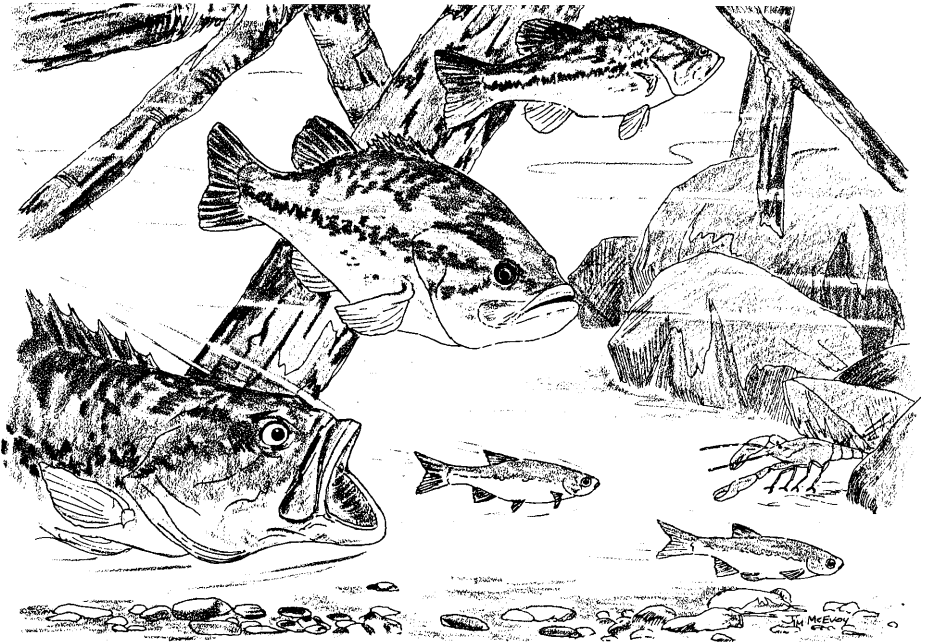


# Wisconsin Lakes



Wisconsin Department of Natural Resources

PUB-FH-800 2005

# Wisconsin Lakes



This publication produced by  
Bureau of Fisheries and Habitat Management

This publication funded in part by  
the Aquatic Resources Trust Fund—Sport Fish Restoration Program



© Copyright 2001, Wisconsin Department of Natural Resources

The Wisconsin Department of Natural Resources provides equal opportunity in its employment, programs, services and functions under an Affirmative Action Plan. If you have any questions, please write to Equal Opportunity Office, Department of the Interior, Washington, D.C. 20240.

This publication is available in alternate format (large print, Braille, audio tape, etc.) upon request. Call 608-267-7498 for more information.



Printed on Recycled Paper

GP5/01

## **Preface**

This booklet is a public reference for Wisconsin lakes. It provides information on the physical attributes of lakes such as the size, depth, type of public access, availability of lake maps, the relative abundance of fish species, exotic plants and animals and information about fish consumption advisories.

Observations and data collected in the 1950s and 1960s by Department of Natural Resources field staff form the base of information for this publication. Continual field work and input from staff and the public over the years provide updates on changing conditions of some, but not all lakes listed herein.

This publication will be updated periodically, to reflect the most current information available on Wisconsin's lakes. Please notify the DNR field station nearest you (refer to the back cover) if you are aware of any omissions, errors, or changes that require attention in the next edition of *Wisconsin Lakes*.

## **Useful Lake Web Addresses**

Today's access to the most current and extensive datasets and documents is on the World Wide Web.

**Wisconsin's State Portal** - <http://www.wisconsin.gov/>

**DNR's Home Page** - <http://dnr.wi.gov/>

**Wisconsin's Lakes Information Source**  
**(Wisconsin Association of Lakes)**

<http://www.wisconsinlakes.org/>

### **Lakes**

Lakes Partnership in the DNR, UW-Ext., Self Help Lakes and WI Lakes book.

<http://dnr.wi.gov/lakes/>

<http://www.uwsp.edu/cnr/uwexlakes/>

<http://dnr.wi.gov/lakes/CLMN/>

<http://dnr.wi.gov/org/water/fhp/lakes/list/#lakebook>

### **Boating Safety -**

<http://dnr.wi.gov/org/es/enforcement/safety/boatsaf.htm>

**Dam Safety** - <http://dnr.wi.gov/org/water/wm/dsfm/dams/>

**Fish Wisconsin** - <http://dnr.wi.gov/fish/>

**Lake Michigan** - <http://dnr.wi.gov/fish/lakemich/>

**Rivers** - <http://dnr.wi.gov/org/water/rivers/>

**Shorelands** - <http://dnr.wi.gov/org/water/wm/dsfm/shore/>

**Watersheds** - <http://dnr.wi.gov/org/water/wm/>

**Waterway Permits** - <http://dnr.wi.gov/org/water/fhp/waterway/>

**Wetlands** - <http://dnr.wi.gov/wetlands/>

**Wisconsin Tourism** - <http://www.travelwisconsin.com/>

## **National Lake Information**

**(North American Lake Management Society)** - <http://www.nalms.org/>

## **Lake Variability and Descriptions**

Each lake has qualities which make it unique, much like people with distinct personalities. Lakes vary based on physical characteristics, such as size, depth, configuration, chemical characteristics (such as soft versus hard water), water clarity, or the types of plant and animal life present. For example, hard water lakes have higher levels of dissolved minerals such as calcium, iron and magnesium than soft water lakes. Some lakes, especially those near acidic wetlands like bogs, are stained with tannic acid that leaches from surrounding vegetation. The water in these “tannin lakes” may range in color from a dark brown “coffee” color to light brown.

Natural lakes in Wisconsin frequently are classified by the source of water supply. Based on water source and outflows, four categories of lakes have been identified in this publication:

**1. Drainage lakes** - These lakes have both an inlet and outlet where the main water source is stream drainage. Most major rivers in Wisconsin have drainage lakes along their course. Drainage lakes owing one-half of their maximum depth to a dam are considered to be artificial lakes or impoundments.

**2. Seepage lakes** - These lakes do not have an inlet or an outlet, and only occasionally overflow. As landlocked waterbodies, the principal source of water is precipitation or runoff, supplemented by groundwater from the immediate drainage area. Since seepage lakes commonly reflect groundwater levels and rainfall patterns, water levels may fluctuate seasonally. Seepage lakes are the most common lake type in Wisconsin.

**3. Spring lakes** - These lakes have no inlet, but do have an outlet. The primary source of water for spring lakes is groundwater flowing into the bottom of the lake from inside and outside the immediate surface drainage area. Spring lakes are the headwaters of many streams and are a fairly common type of lake in northern Wisconsin.

**4. Drained lakes** - These lakes have no inlet, but like spring lakes, have a continuously flowing outlet. Drained lakes are not groundwater-fed. Their primary source of water is from precipitation and direct drainage from the surrounding land. Frequently, the water levels in drained lakes will fluctuate depending on the supply of water. Under severe conditions, the outlets from drained lakes may become intermittent. Drained lakes are the least common lake type found in Wisconsin.

## Artificial Lakes

Artificial lakes are human-made bodies of water referred to as impoundments. In this publication, a lake is considered an impoundment if one-half or more of its maximum depth results from a dam or other type of control structure. An impoundment is considered a drainage lake since it has an inlet and outlet with its principal water source coming from stream drainage. Approximately 13 percent of Wisconsin's lakes fit this definition.

## Lake Type Characterizations

The water quality of a lake and species of fish present are significantly influenced by the lake type. For example, drainage lakes support fish populations which are not necessarily identical to the streams connected to them. Drainage lakes, particularly impoundments, usually have higher nutrient levels than many natural seepage or spring lakes.

In contrast to drainage lakes, landlocked seepage lakes are not influenced by streams. Consequently, seepage lakes frequently have a less diverse fishery. Seepage lakes also have a smaller drainage area, which may help to account for lower nutrient levels.

## About the Contents of this Publication

This booklet contains information on all named lakes in Wisconsin and all unnamed lakes of more than 20 acres. The lakes are listed alphabetically by county. The following notes may help you use this publication.

**Lake Name** - The official name is listed according to "Wisconsin Geographical Names" and as shown on U.S. Geological Survey 7<sup>1</sup>/<sub>2</sub> minute quadrangle maps. Many lakes also have a different local name, which is listed in parenthesis after the official name. An asterisk (\*) following the lake name indicates that the lake is a border lake and is counted for total number of lakes and acreage in another county.

**Surface Area** - This column provides information on the lake size of a lake in acres of open water. For lakes that span state lines total acreage is given in the column under surface area and the Wisconsin acreage is listed in parenthesis after the lake name. The area below the ordinary high water mark (OHWM), which is legally the lake's bed, may be a different size.

**Maximum Depth** - The maximum depth in feet is recorded at the deepest point in a lake. All lakes in this publication should have a maximum depth listed.

**Mean Depth** - The mean depth in feet is an average determined from the lake volume and area. Not all lakes have a mean depth listed, only those with completed lake survey maps.

**Public Access** - Detailed access information is available for most counties in the state. Many public fishing piers are now wheelchair-accessible. For information on specific access sites, contact your nearest DNR office. Each office has a copy of *Fishing and Boating Access for Everyone*. Copies of individual location maps with descriptions of the amenities available at that site can be provided to you. In the column titled “Public Access,” the following abbreviations describe existing access where information is available:

- BR Boat Ramp. These are sites with a defined public boat launching facility which may or may not have parking.
- BF Barrier-free Boat Ramp. These sites have a boarding dock or means of wheelchair access to boats.
- P Barrier-free Pier. These piers were designed to accommodate wheelchairs.
- T Walk in Trail. These access sites are partially developed, excluding a boat ramp, and are entirely within public lands.
- R Roadside. These sites do not include any access developments. Public roads with a marked right-of-way extending to the water provide a limited degree of access.
- W Wilderness in Public Ownership. A lake is in a wilderness area if there are no roads or buildings within 200 feet of the waterbody. Wilderness lakes have no defined walk-in trail to the water.
- BW Barrier-free Wilderness Access. These site have a firm surface to gain access to the water, but no special piers or ramps.
- NW Navigable Water. Navigable access is provided by the presence of an inlet or outlet stream which furnishes adequate boat access to a lake. A small stream not large enough to float a boat does not provide effective navigable access.

A few counties do not have detailed access information. For those waters marked with an “x,” some type of access, other than navigable water access, is available. Regulations governing boat usage are effective on certain lakes and are posted at the public access sites.

**Map** - If a lake survey map showing the contour depths in a lake is available, an “X” appears in the column called “Map.” Nearly one fourth of all the named lakes in the state have been mapped. Lake survey maps provide valuable information for lake property owners and anglers who wish to know more about the lake depths.

**Lake Type** - The four lake types identified in this publication are defined on page one. The following abbreviations describe the category of lake type:

DG = Drainage lake

SE = Seepage lake

SP = Spring lake

DN = Drained lake

**Species of fish** - The relative abundance of various game fish species including muskellunge, northern pike, walleye, largemouth bass, smallmouth bass, panfish, trout, catfish and sturgeon is listed. Abundance of a fish species is coded using the following symbols:

**A = Abundant**    **C = Common**    **P = Present**

The absence of any symbol means that a fish species is not present.

**Some recent exotic species -**

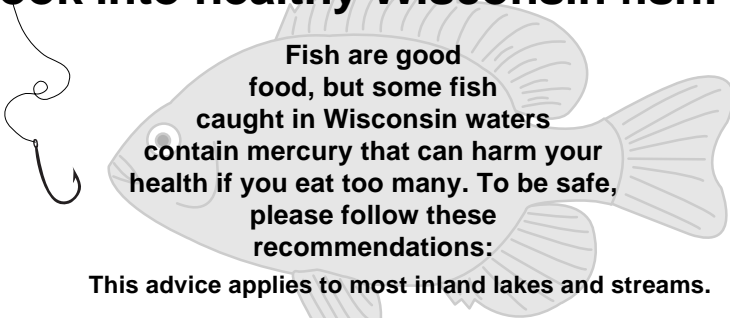
**E = Eurasian Water Milfoil (*Myriophyllum spicatum*)**  
It is an aquatic plant.

**Z = Zebra Mussel (*Dreissena polymorpha*).**

For more information on exotic species, refer to **page 179.**

---

## Hook into healthy Wisconsin fish!



**Women of childbearing years, nursing mothers and all children under 15 may eat:**

- 1 meal per week of bluegill, sunfish, black crappie, white crappie, yellow perch or bullheads, AND
- 1 meal per month of walleye, northern pike, smallmouth bass, largemouth bass, channel catfish, flathead catfish, white sucker, drum, burbot, sauger, sturgeon, carp, white bass, rock bass or other species.

**Men, and women beyond their childbearing years may eat:**

- unlimited amounts of bluegill, sunfish, black crappie, white crappie, yellow perch, or bullheads, AND
- 1 meal per week of northern pike, smallmouth and largemouth bass, channel and flathead catfish, walleye or other species.

Some waters contain PCBs at levels that pose a health concern.

For more information, call your local DNR office, your local health department, or visit the web: <http://dnr.wi.gov>

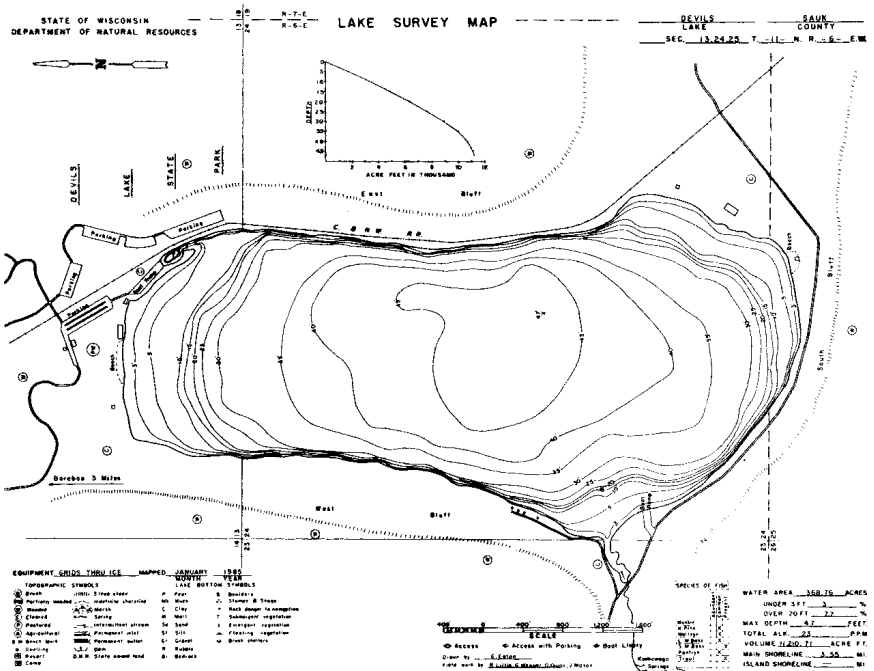
# Map Information

Frequently, people need help finding a particular lake. There are a number of maps available with varying levels of detail.

Although the DNR has some lake maps available at Madison and district offices, the DNR does not routinely print or stock lake maps for public distribution. **Some are on the Web at [dnr.wi.gov/org/water/fhp/lakes/lakemaps/LKmaps\\_a.htm](http://dnr.wi.gov/org/water/fhp/lakes/lakemaps/LKmaps_a.htm).** If you wish to inquire about the availability of maps from the DNR, you may call (608) 266-2621. A more complete set of maps are available and can be purchased for about \$2.00 each, plus tax and handling charges, from:

The Clarkson Map Company  
 1225 Delanglade Street  
 Box 218  
 Kaukauna, WI 54130  
 Phone: 920-766-3000

Figure 1 shows the level of detail contained in a lake survey map.





Fishing Hot Spots is another source of lake maps. The company has a series of books which detail lakes and rivers by geographic boundaries. The company also has lake contour maps marked with fishing spots for individual lakes or chains of lakes. Fishing Hot Spots provides a catalog of directories and maps along with detailed reports on many Wisconsin lakes. To obtain information on these lake maps, books or reports contact:

Fishing Hot Spots  
P.O. Box 1167  
Rhineland, WI 54501  
Phone 1-800-338-5957

The official state map, published by the Department of Transportation, shows lakes of about 100 acres and larger and locates federal, state and county highways. More detailed individual county maps are also published by the Department of Transportation. These 18" x 24" maps (on the scale of  $\frac{1}{2}$ " = 1 mile) show all Wisconsin highways including town roads. The majority of all the lakes in Wisconsin, even the smaller lakes, are shown on these county maps.

Official state maps or county maps are available from:

The Department of Transportation  
Division of Highways, Document Map Sales  
3617 Peirstorff Street  
Madison, WI 53707  
Phone: 608-246-3265

Prices for the county maps (based on 2001 prices) are \$1.20 each. Smaller maps (8 1/2" x 11" on a scale of approximately  $\frac{1}{4}$ " = 1 mile) are available for \$0.50 each or \$5.50 for a booklet of all 72 Wisconsin counties. The official State of Wisconsin highway map is free.

The most detailed maps available are the U.S. Geological Survey 7 1/2 minute quadrangle maps. These maps show the location of all lakes in the state, even those less than one acre in size, the boat access sites, and all roads down to trail size.

The 7 1/2 minute quadrangle maps can be ordered from:

Wisconsin Geological & Natural History Survey  
3817 Mineral Point Road  
Madison, WI 53705  
Phone: 608-263-7389

Prices for these quadrangle maps are approximately \$4.75 each, plus tax.

Topographic maps of the entire state are included in a book titled “Wisconsin Atlas and Gazetteer.” Although on a somewhat smaller scale than the individual topographic maps, the maps in this book do provide an excellent level of detail for the back roads and lakes in Wisconsin. “Wisconsin Atlas and Gazetteer” can be ordered from:

DeLorme Mapping Company  
P. O. Box 298  
Yarmouth, Maine 04096  
Phone: 1-800-425-5931

The 2001 price for the book was \$19.95 plus \$5.00 shipping. This book is also available at many local bookstores and sporting good shops.

Milwaukee Map Service has detailed road maps divided by four regions: northwestern, southwestern, northeastern and southeastern. Besides the names of all the town roads in Wisconsin, these maps show the location of most of the lakes in the state.

These four regional road maps can be ordered from:

Milwaukee Map Service, Inc.  
959 N. Mayfair Rd.  
Milwaukee, WI 53226  
Phone: 414-774-1300

The 2001 prices for these maps were SW; \$5.95, NW, NE, or SE; \$9.95 each or \$35.80 plus tax and shipping for the entire state. The Milwaukee Map Service also has additional maps available, such as individual county maps, county plat books, aerial photos or navigational charts.

CD MAP-IT has developed a CD-ROM with an estimated 1,000 WI lake maps. Search lakes by lake name, county, fish types, and public access types. Print your own lake maps, export to other software, never lose the original. Requirements of Microsoft Windows (R) 3.1 or NT is all you need with a CD-ROM drive. Available on Separate CDs.

Please contact CDMAP-IT for pricing information:

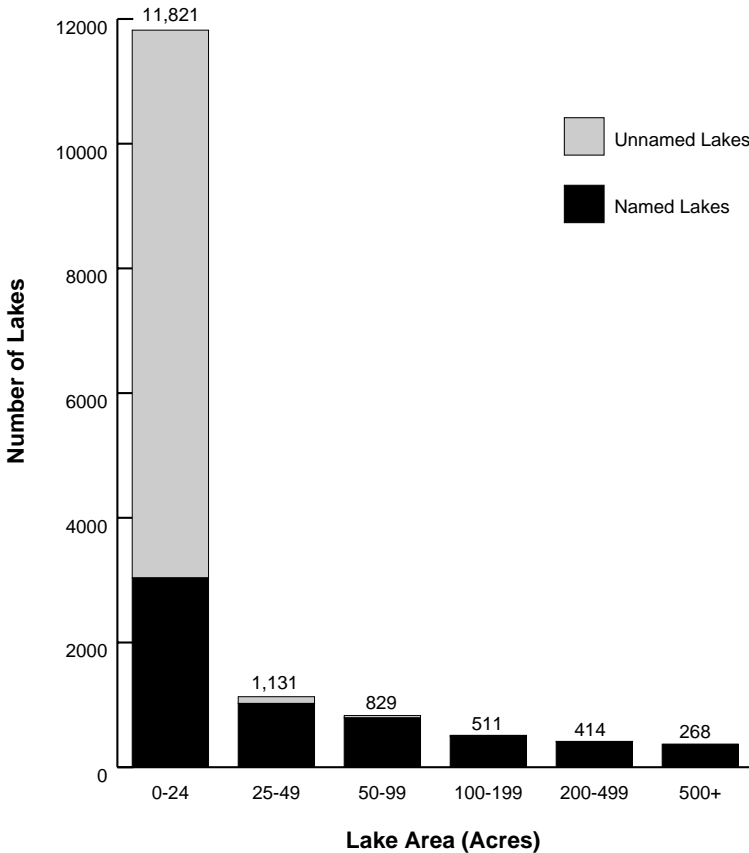
phone: 1-800-628-8577 or 920-730-8691  
FAX: 920-730-8616  
e-mail: DeanTande@AOL.com

## General Facts about Wisconsin Lakes

Wisconsin is a state rich in lakes. It's approximately 15,000 lakes range in size from small one-and two-acre spring ponds to 137,708-acre Lake Winnebago. Due to variations in chemical and biological composition, physical characteristics, and diversity of origin, each lake should be considered unique.

Of the 15,081 documented lakes in Wisconsin, only about 40 percent have actually been named. The majority of the unnamed lakes are very small, less than 10 acres. Most lakes are in the northern and eastern parts of the state dotting the path of the glaciers. The unglaciated region, or Driftless Area, of southwestern Wisconsin has very few lakes by comparison.

About 3,620 of the state's lakes are larger than 20 acres, constituting more than 93 percent of the surface area of Wisconsin's inland lakes. The total inland lake surface acreage in the state approaches one million acres. Figure 2 shows the relative percent of lakes in different size categories in Wisconsin.



The depth of Wisconsin's *natural* inland lakes also varies a great deal, ranging from a few feet to a maximum depth of 236 feet in Green Lake (Big Green) in Green Lake County.

In addition to the inland lakes, portions of Lakes Michigan and Superior lie within Wisconsin's boundaries. These Great Lakes are two of the largest freshwater bodies in the world, and they add nearly 6.5 million acres of water to Wisconsin.

**Wisconsin Lakes Roundup**

County with the most lakes - Vilas: 1,318

Counties with the fewest named lakes - Brown and Outagamie: 4

**Five Lakes with the largest surface area in Wisconsin:**

Lake Winnebago, Winnebago County:	137,708	acres
Petenwell Lake, Juneau County:	23,040	acres
Chippewa Lake (Chippewa Flowage), Sawyer County:	15,300	acres
Poygan Lake, Winnebago County:	14,102	acres
Castle Rock Flowage, Juneau County:	13,955	acres

**Five Deepest Named Lakes in Wisconsin:**

Lake Wazee, Jackson County	350	feet
Green Lake (Big Green), Green Lake County:	236	feet
Redgranite Quarry, Waushara County:	163	feet
Lake Geneva, Walworth County:	135	feet
Lohrville Quarry, Waushara County:	120	feet

**Five Most Common Lake Names in Wisconsin:**

Mud Lake:	116 lakes
Bass Lake:	82 lakes
Long Lake:	59 lakes
Spring Lake:	45 lakes
Lost Lake:	42 lakes

**Lake with the Largest Volume in Wisconsin:**

Lake Winnebago, Winnebago County - 696 billion gallons (based on a average depth of 15.5 feet)

**Largest man-made lake in Wisconsin:**

Petenwell Lake, Juneau County - 23,040 acres (36 square miles)

**Lake with the most shoreline:**

Lake Winnebago, Winnebago County - 85 miles

## State Hook and Line Records for Game Fish:

Species	Lake, County	Weight	Year Caught
Largemouth bass	Lake Ripley, Jefferson County	(11 lbs. 3 oz.)	1940
Smallmouth bass	Indian Lake, Oneida County	(9 lbs. 1 oz.)	1950
Rock bass	Shadow Lake, Waupaca County	(2 lbs. 15 oz.)	1990
White bass	Okauchee Lake, Waukesha County	(4 lbs. 6 oz.)	1977
Bluegill	Green Bay, Brown County	(2 lbs. 9.8 oz.)	1995
Cisco	Green Lake, Green Lake County	(4 lbs. 10.5 oz.)	1969
Black crappie	Gile Flowage, Iron County	(4 lbs. 8 oz.)	1967
White crappie	Black River, Clark County	(3 lbs. 2 oz.)	2001
Muskellunge	Lake Chippewa, Sawyer County	(69 lbs. 11 oz.)	1949
Northern Pike	Lake Puckaway, Green Lake County	(38 lbs. 0 oz.)	1952
Yellow Perch	Lake Winnebago, Winnebago County	(3 lbs. 4 oz.)	1954
Sauger	Lake Wisconsin, Columbia County	(5 lbs. 13 oz.)	1988
Sturgeon	Yellow Lake, Burnett County	(170 lbs. 10 oz.)	1979
Sunfish	Wind Lake, Racine County	(1 lbs. 9 oz.)	1967
Walleye	High Lake, Vilas County	(18 lbs. 0 oz.)	1933
Brook Trout (inland)	Prairie River, Lincoln County	(9 lbs. 15 oz.)	1944
Brook Trout (outlying)	Lake Michigan, Ozaukee County	(10 lbs. 1 oz.)	1999
Brown Trout (inland)	Lake Geneva, Walworth County	(18 lbs. 6 oz.)	1984
Brown Trout (outlying)	Lake Michigan, Kewaunee County	(35 lbs. 1.9 oz.)	1978
Lake Trout (inland)	Big Green, Green Lake County	(35 lbs. 1.9 oz.)	1957
Lake Trout (outlying)	Lake Superior, Bayfield County	(47 lbs. 0 oz.)	1946
Rainbow Trout	Lake Michigan, Kewaunee County	(27 lbs. 2 oz.)	1992
Coho Salmon	Lake Michigan, Sheboygan County	(24 lbs. 6 oz.)	1975
Chinook Salmon	Lake Michigan, Kewaunee County	(44 lbs. 15 oz.)	1994

For a complete and updated list of Wisconsin angling records look on the Web at [dnr.wi.gov/fish/record/](http://dnr.wi.gov/fish/record/)

or contact the DNR at (608) 267-9426.

## Great Lakes Facts

---

	Lake Superior	Lake Michigan
Elevation (feet)**	600	577
Length (miles)*	350	307
Width (miles)*	160	118
Average Depth <sup>a</sup> (feet)**	483	279
Maximum Depth <sup>a</sup> (feet)**	1,330	923
Volume <sup>a</sup> (cu. miles)*	2,900	1,180
Area:		
Water Area (sq. mi.)*	31,700	22,300
Land Drainage Area (sq. mi.)*	49,300	45,600
Total Area (sq. mi.)*	81,000	67,900
Shoreline Length (miles)*	2,726	1,638
Residence Time <sup>b</sup> (years)**	191	99

---

### Notes:

<sup>a</sup> Measured at low water datum.

<sup>b</sup> Residence time is the amount of time required to completely replace the lake's current volume of water with an equal volume of "new" water.

### Sources:

\* Coordinating Committee on Great Lakes Basic Hydraulic and Hydrologic Data, COORDINATED GREAT LAKES PHYSICAL DATA. May, 1977.

\*\* EXTENSION BULLETINS E-1866-70, Michigan Sea Grant College Program, Cooperative Extension Service, Michigan State University, East Lansing, Michigan, 1985.

## Lake Protection

Wisconsin's lakes are watery jewels that add much to the diversity of our landscape and provide unique opportunities for outdoor recreation. Shoreline lots are popular and prized as homesites, but lakes are fragile, and increasing use and shoreline development can strain ecosystems by increasing sediments and nutrients to them causing many problems.

The major problems associated with lakes are: eutrophication, when increased nutrients in the water lead to algae blooms and nuisance weeds; sedimentation; and contamination caused by the addition of harmful chemicals. These problems can be avoided or reduced through proper lake and watershed management.

Citizens can play a key role in preventing the deterioration of lakes by supporting proper watershed management, protection of shorelines, and control of water uses.

All land activities, especially home and business building, road construction, logging and farming, have the potential to increase erosion and harm lakes. However, with proper precautions, land owners can decrease soil erosion from these activities and thus minimize damage.

Lake property owners can advocate both temporary and permanent stormwater controls on land subdivisions, commercial development, and construction activity. Efforts such as these can protect shorelands from overuse and help maintain natural shorelines that act as buffers, intercepting soil and nutrients headed for a lake.

The level of motor boat traffic can influence the quality of other water-based recreation sports and also the water quality of a lake. Lake property owners can do their part by determining relevant town ordinances which regulate motor boat use. Boating regulations also help preserve the natural solitude of a lake.

### ***The Lake List* — People Who Care about Lakes**

Wisconsin's lake management organizations are people. People who live on or use lakes regularly. People who know firsthand the lake water, their plant and fish communities, and the lands around the lakes. People who know their neighbors, and people whose concern prompts them to join together to preserve and protect the beauty and bounty of the lake. *The Lake List* contains lake organizations and leaders, sources of assistance for rural property owners, and firms providing equipment or services for lake management. To obtain a copy of *The Lake List* send your request to:

Lake Management Program  
University of Wisconsin Extension  
College of Natural Resources  
University of Wisconsin - Stevens Point  
Stevens Point, WI 54481  
715-346-2116

## Inland Lake Summary Information By County\*

County	Named Lakes		Unnamed Lakes		Totals	
	Number	Acres	Number	Acres	Number	Acres
Adams	23	2,251	24	58	47	2,309
Ashland	84	5,636	73	300	157	5,936
<b>Barron</b>	<b>124</b>	<b>16,475</b>	<b>245</b>	<b>1,273</b>	<b>369</b>	<b>17,748</b>
Bayfield	339	20,604	623	2,025	962	22,629
Brown	4	94	18	76	22	170
Buffalo	7	192	1	4	8	196
<b>Burnett</b>	<b>228</b>	<b>29,865</b>	<b>281</b>	<b>1,393</b>	<b>509</b>	<b>31,258</b>
Calumet	6	91	2	7	8	98
Chippewa	200	19,139	249	888	449	20,027
Clark	16	966	16	110	32	1,076
Columbia	27	2,986	29	109	56	3,095
Crawford	9	6,005	68	238	77	6,243
Dane	36	21,504	27	284	63	21,788
Dodge	20	14,182	9	64	29	14,246
Door	25	3,254	-	-	25	3,254
Douglas	154	13,050	277	1,063	431	14,113
Dunn	10	3,915	10	38	20	3,953
Eau Claire	10	2,780	10	58	20	2,838
Florence	101	6,860	158	399	259	7,259
Fond du Lac	31	1,625	11	30	42	1,655
Forest	194	21,305	630	1,226	824	22,531
Grant	23	1,543	10	26	33	1,569
Green	5	350	-	-	5	350
Green Lake	14	16,985	22	135	36	17,120
Iowa	12	664	3	21	15	685
Iron	217	28,856	277	512	494	29,368
Jackson	48	2,819	87	2,185	135	5,004
Jefferson	23	3,677	10	33	33	3,710
Juneau	23	45,051	34	899	57	45,950
Kenosha	34	3,674	-	-	34	3,674
Kewaunee	14	250	1	1	15	251
La Crosse	7	8,547	12	21	19	8,568
Lafayette	5	539	3	26	8	565
Langlade	238	7,712	603	1,410	841	9,122
Lincoln	152	14,307	577	1,278	729	15,585
Manitowoc	56	1,310	45	182	101	1,492
Marathon	60	19,389	134	373	194	19,762



County	Named Lakes		Unnamed Lakes		Totals	
	Number	Acres	Number	Acres	Number	Acres
Marinette	242	13,228	200	507	442	13,735
Marquette	61	5,619	32	117	93	5,736
Menominee	56	3,767	72	277	128	4,044
Milwaukee	40	195	1	2	41	197
Monroe	28	1,050	91	2,383	119	3,433
Oconto	200	10,486	178	567	378	11,053
Oneida	428	66,391	701	2,056	1129	68,447
Outagamie	4	118	29	95	33	213
Ozaukee	23	566	16	143	39	709
Pepin	9	221	20	57	29	278
Pierce	10	5,836	28	180	38	6,016
Polk	222	20,234	215	666	437	20,900
Portage	77	11,842	60	373	137	12,215
Price	160	13,759	228	1,289	388	15,048
Racine	20	3,891	2	28	22	3,919
Richland	9	251	-	-	9	251
Rock	19	11,004	56	155	75	11,159
Rusk	88	7,162	162	692	250	7,854
St. Croix	30	3,392	33	261	63	3,653
Sauk	24	10,970	4	23	28	10,993
Sawyer	243	54,581	252	1,516	495	56,097
Shawano	54	8,725	80	187	134	8,912
Sheboygan	41	2,011	31	100	72	2,111
Taylor	98	5,682	186	501	284	6,183
Trempealeau	14	364	12	45	26	409
Vernon	10	188	47	68	57	256
Vilas	563	91,191	755	2,698	1318	93,889
Walworth	35	12,796	2	2	37	12,798
Washburn	267	27,339	697	3,926	964	31,265
Washington	52	3,075	2	5	54	3,080
Waukesha	79	14,969	39	168	118	15,137
Waupaca	141	6,780	99	372	240	7,152
Waushara	97	4,445	41	178	138	4,623
Winnebago	8	169,603	22	152	30	169,755
Wood	13	4,774	65	1,471	78	6,245
<b>Totals*</b>	<b>6,044</b>	<b>944,957</b>	<b>9,037</b>	<b>38,005</b>	<b>15,081</b>	<b>982,962</b>

\* Totals do not reflect Lakes Superior and Michigan acreage. See page 14 for Great Lakes information.

# ASHLAND COUNTY

continued

Lake	Area	Maximum Depth	Mean Depth	Public Access	Lake map	Lake Type	Muskie	Northern Pike	Walleye	LM bass	SM bass	Panfish	Trout	Catfish	Sturgeon	Exotic Species
Moquah Lake	50	8	5	NW	X		C			C		A				
Mud Lake (Gormely)	10	14			X	SE						P				
Muskellunge Lake	22	8	6	W	X	DG	P			P		P				
Parker Lake	13	6				DG						P				
Pelican Lake	40	13	3	NW	X	DG	C	C	C		P	P				
Pictured Rock Lake	5	9				SE						P				
Pole Lake	13	21		T	X	SE						P	C			
Potter Lake	29	11	8	BR	X	SE	P			P		C				
Seagels Lake	7	9				SE						P				
Seitz Lake (Sietz, Sitz)	19	6	2		X	DG	P					P	P			
Sells Lake	16	5				DG	P	P		P	P		P			
Slim Lake	15	33				SE						C				
Snoose Lake (Snooze)	24	13			X	SE				C		C				
Snowshoe Lake (Billard)	24	11	8		X	DG				P		C				
Spider Lake	103	25	12	BR	X	DG	C			C		C				
Spillerberg Lake	75	24	9	BR	X	DG	C		P	P		C				
Sugarbush Lake	4	9				SE										
Summit Lake	91	6				SE				P		P				
Tea Lake	50	48	22	W	X	DG		P	C	P		P				
Three Lake	72	13	6	BR	X	DG				C		P				
Torrey Lake	30	31	15		X	SE	P	P		P		A				
Trout Lake	5	28		T		SE							C			
Twin Lake, East	110	15	7	BR,P	X	SE	C			P		C				
Twin Lake, West	44	20	12	W	X	SE				C		C				
Twin Lakes, East	24	24	12		X	SE				C		C				
Twin Lakes, West	59	14	6		X	SE				C		C				
Unnamed T52N R01W S10-3	52	6		W		SE		P								
Upper Clam Lake	166	20	11	BR	X	DG	C	P	C	P		C				
White River Flowage	56	26	7	BR	X	DG		C		P		P	P			
Wolf Lake	5	17				SE						P				
Wolfs Pond	3	7				SE										
Woodtick Lake	12	5		W		SE						P				
Zielke Lake	21	16	7	R	X	DG	C	P	C	P		P				

# BARRON COUNTY

Anderson Lake	14	17	10	BR	X	SE		P	P	C		C				
Bailey Lake	43	7				SE						C				
Barron Flowage No. 1	48	12	5	BR	X	DG		C		P		C				
Barron Flowage No. 2	2	10		T		DG						P				
Barron Flowage No. 3	65	10	4	BR	X	DG		C		P		C	P			
Bass Lake T33N R10W S34	118	14	9	BR	X	SE		C		C		P				
Bass Lake T33N R14W S32	19	19				SE				C		C				
Bass Lake T36N R10W S02	19	39	13	T	X	SE		C		C		C				

**BARRON COUNTY**

**continued**

Lake	Area	Maximum Depth	Mean Depth	Public Access	Lake map	Lake Type	Muskie	Northern Pike	Walleye	LM bass	SM bass	Panfish	Trout	Catfish	Sturgeon	Exotic Species
Bass Lake T36N R12W S10	23	21		W		SE		P		P		A				
Bear Lake	1,358	87	20	BR	X	DG		C	C	C	P	C				
Beauty Lake	11	10				SE						C				
Beaver Dam Lake	1,112	106	3	BR	X	SE		C	C	C	P	C				E
Big Dummy Lake	111	54	12	BR	X	SE		C	C	C		C				
Big Moon Lake	191	48	24		X	SE	P	P	C	C		C				
Blueberry Lake	8	6		BR		SE										
Bowman Lake	12	17				SE						C				
Buck Lake	57	20	6		X	DG		P		C		C				
Bullhead Lake	14	8				SE										
Butternut Lake	141	15	7	BR	X	SE		P		P		C				
Cameron Flowage	72	9		T		DG		C	C	P		C				
Chain Lake T36N R10W S07	107	19	7	BR	X	SE		P	P	P		C				
Chain Lakes T36N R13W S23	43	15		W		SE		P				C				
Chetek Lake	770	22	13	BR	X	DG		C	C	C	P	C				
Couderay Lake	11	3				SE										
Cranberry Lake	9	28				SE				C		C				
Crooked Lake	15	10		W		SE						C				
Crystal Bay Lake	9	16				SE		C		C		C				
Crystal Lake	120	22	10	R	X	SE		C		C		C				
Dallas Flowage	27	9		BR		DG						C		P		
Deep Lake	2	19				SE										
Deer Lake	9	17				SE		P		P		C				
Desair Lake	81	33	17	BR	X	SE		C		C		C				
Devils Lake, Lower	162	26	9	NW	X	SE		C	C	C		C				
Devils Lake, Upper	86	10	4	BR	X	SE		C	C	C		C				
Dietz Lake No. 1	21	15				SE		P		P		C				
Dietz Lake No. 2	12	8				SE						C				
Dietz Lake No. 3	16	23		W		SE		P		P		C				
Dietz Lake No. 4	15	12				SE		P	P	P		C				
Duck Lake	100	26	14	BR	X	DG		C	P	P		C				E
Echo Lake	161	41	20	BR	X	SE		C	P	C		C				E
Elbow Lake	12	5				SE										
Firetag Lake	8	4				SE										
Fish Lake	8	34				SE		P		P		P				
Fox Lake	12	18				SE		P		P		C				
Gates Lake	15	9		R		SE										
Ginder Lake	21	18				SE		P		P		P				
Goose Lake	12	12		W		SE						A				
Granite Lake	154	34	18	BR	X	DG		C	P	C		C				
Greely Lake	56	13				SE		C	C	C		C				
Hemlock Lake	357	21	8	BR	X	DG		C	P	C	P	C				
Hillman Lake	23	10				SE		P		P		C				
Hogback Lake	15	8		R		SE				P		C				

**BARRON COUNTY**

**continued**

Lake	Area	Maximum Depth	Mean Depth	Public Access	Lake map	Lake Type	Muskie	Northern Pike	Walleye	LM bass	SM bass	Panfish	Trout	Catfish	Sturgeon	Exotic Species
Horseshoe Lake T34N R14W S06	377	57	20		X	SE		C	P	C		C				
Horseshoe Lake T36N R14W S03	115	19	10	BR	X	SE		P	C	P		C				
Johnnys Lake	8	6				SE										
Kelleys Lake	19	12		W		SE						C				
Kelly Lake	18	41		W		SE		P		P		C	C			
Kidney Lake	40	32	10	T	X	SE		C		C	C	P				E
Kirby Lake T36N R12W S08	7	13		W		SE				P		P				
Kirby Lake T36N R14W S14	92	19	8	BR	X	SE		C		C	C	C				
Lake of The Woods (Bass)	46	55	20		X	SE		P		C	C	C				
Little Bass Lake	24	56				SE		P		C	C	P				
Little Butternut Lake	22	16	9	W	X	SE		P		P		C				
Little Dummy Lake	31	44	13	BR	X	SE		C		C		C				
Little Granite Lake	22	56	22	BR	X	SE				P		C	P			
Little Lake	7	7				SE										
Little Moon Lake	27	30		BR	X	SE		P		P		P				
Little Sand Lake	101	36	13	BR	X	SE	P	C		C		C				
Little Silver Lake	18	20		T		SE		P		P		P				
Long Lake T32N R14W S06	6	6				SE										
Long Lake T35N R14W S20	40	13		T		SE		P		P		C				
Loon Lake	94	26	11	BR	X	SE		C	P	C	C	C				
Lower Vermillion Lake	208	55	24		X	DG		C	C	C	C	C				
Minnow Lake	26	12				SE		P		P	P	A				
Mitchell Lake	28	14				SE				C	C	C				
Montanis Lake	200	14	8	BR	X	DG		C	C	P	P	C				
Moon Lake	84	5		BR		SE		P		P		C				
Moose Ear Lake	34	6		R	X	DG		P		C		C				
Mud Lake T32N R11W S02	22	19				SE		P		P		C				
Mud Lake T33N R10W S06	577	15	4	BR	X	DG		C	C	C	P	C				
Mud Lake T34N R14W S29	19	4				SE										
Mud Lake T35N R14W S16	23	11		R		SE		P		P		C				
Mud Lake T36N R12W S30	24	7		R		SE										
Mud Lake T36N R12W S34	4	17		R		SE				P		C				
Musket Lake (Mosquito)	25	11				SE						A				
North Lake	89	21	11	BR	X	SE		C		C		A				
Old Mill Pond	5	9				SE										
Pea Viner Lake	3	6				SE										
Peterson Lake	37	13			X	SE		C		C		C				
Pickerel Lake	37	25		BR		SE		P		P		P				
Pine Lake	7	5				SE						P				
Pokegama Lake	506	19	11	BR	X	DG		C	C	C	P	C				
Poskin Lake	150	30	16	BR	X	DG		C	P	C		C				
Prairie Farm Flowage	29	8		BR		DG		P	P	P		P				

**BARRON COUNTY**

**continued**

Lake	Area	Maximum Depth	Mean Depth	Public Access	Lake map	Lake Type	Muskie	Northern Pike	Walleye	LM bass	SM bass	Panfish	Trout	Catfish	Sturgeon	Exotic Species
Prairie Lake	1,534	16	9	BF	X	DG		C	C	C	P	C				
Red Cedar Lake	1,841	53		BR	X	DG		C	C	C	C	C				
Redman Lake	10	5				SE										
Rice Lake	939	19	9	BR,P	X	SE	C	C	P	C		C				
Robinson Lake	3	30				SE										
Round Lake T36N R10W S07	10	11	6	NW	X	SE		P				C				
Round Lake T36N R12W S10	18	16				SE						C				
Sand Lake	322	57	28	BR	X	DG	C	C	C	C		C				E
Scott Lake	81	26	9	BR	X	SE		P	P	C		C				
Shallow Lake*																
T37N R13W S31	92	30		BR		SE		C		C		C				E
Silver Lake	337	91	38	BR	X	SE		C	C	P	C	C	P			
Skinaway Lake	37	10		R		SE			P	P		C				
Spider Lake	40	13		BR		SE		P		C		C				
Spirit Lake, Lower	24	42				SE				C		C				
Spirit Lake, Upper	7	6				SE										
Spring Lake	60	67	25	BR	X	SE		C	C	C		C				
Staples Lake	305	17	10	BR	X	DG		C	C	C		C				
Stump Lake	129	7	5	R	X	DG	P	C		C		C				
Sweeny Pond	47	12		T		DG		P				P				
Sylvan Lake (Pipe)	67	37	21	BR	X	SE		C		C		C				
Tenmile Lake	376	12	6	BR	X	DG		C	C		P	C				
Thirty Lake	73	27	13	BR	X	SE		C		C		P				
Thompson Lake	5	9				SE										
Turtle Lake, Lower	276	24	14	BR	X	DG		C	C	C		P				
Turtle Lake, Upper	438	25	14	BR	X	DG		C	C	C	P	C				
Tussock Lake	190	25	5	R	X	DG		C		C		C				
Unnamed																
T33N R10W S11-2	28	1				SP		P								
T35N R14W S27-10D	21	10				SE										
T35N R14W S27-8	26	8				SE										
T35N R14W S32-1	35	15				SE		P		P		C				
T36N R13W S23-5	33	14		W		SE				P		C				
T36N R14W S27-6	22	12		W		DG										
T36N R14W S29-14	28	5				SE										
Upper Vermillion Lake	89	9	6		X	DG		P		P		C				
Waterman Lake, Lower	14	21		R		DG		C		C		C				
Waterman Lake, Upper	22	47	20		X	DG		C		C		C				
Wickerts Lake	14	12		R		SE		P				C				
Wildcat Lake	9	26		T		SE						C				

<b>BAYFIELD COUNTY</b> continued																				
Lake	Area	Maximum Depth	Mean Depth	Public Access	Lake map	Lake Type	Muskie	Northern Pike	Walleye	LM bass	SM bass	Panfish	Trout	Catfish	Sturgeon	Exotic Species				
Unnamed																				
T43N R07W S16-16	20	21		NW		SE		P		P		P								
T43N R07W S3-8	29	13				SE														
T44N R09W S29-2	20	5				SE														
T45N R05W S30-2D	24	8				SE														
T46N R08W S1-10	23	7				DG		P		C		C								
T47N R05W S1-6	23	7		R		DG														
T50N R08W S20-16	20	10				DG														
Wabigon Lake (Hubigoon)	35	72		T	X	SE		P		P		C	P							
Wanoka Lake	15	20	11	T	X	SE							P							
Wentzel Lake	18	14				SE						A								
West Lake T43N R08W S15	8	30				SE				C	P	C	A							
West Lake T46N R08W S11	11	17		W		SE				C	P	A								
White Bass Lake	112	30	11		X	SE	C			P		P								
Wilderness Lake	63	18	8	W	X	SE				C		P								
Wiley Lake	60	25	10	NW	X	DG		C		P		C								
Wilipyro Lake (Whipfast, Wiparo)	77	25				SE		P		P		P								
Wishbone Lake	21	54		W	X	SE				P		A								
Wolf Lake	12	27				SE														
Wright Lake	24	13		W		SE						C								
<b>BROWN COUNTY</b>																				
Bay Beach Lagoons	42	15		T		DG														
Lilly Lake	40	21	10	BR	X	SE		P		A		C								
Middle Lake	7	7				SE														
Third Lake	5	15				SE														
Unnamed T24N R20E S10-16	40	4				DG														
<b>BUFFALO COUNTY</b>																				
Bensel Pond	44	5				DN		P				P								
Black Lake	5	4	2			SE		P		P		P								
Duck Lake (Bennetts)	15	3		W		SE		P		P		P								
Lizzie Pauls Pond	44	4		T		SP		P		P		P								
Mirror Lake	29	7	3	T	X	DG				C		C		C						
Rainbow (Gilmanton Pond)	10	10	4			DN						C		C						
Stump Lake	7	1		W		SE		P		P										
<b>BURNETT COUNTY</b>																				
Ann Lake	27	6	6	NW	X	SE														
Austin Lake	86	48	23		X	DG		P	P	P	P	C								
Baker Lake*T38N R16W S36	22	9				SE														
Baker Lake T39N R14W S18	27	6		T		SE														

**BURNETT COUNTY**

**continued**

Lake	Area	Maximum Depth	Mean Depth	Public Access	Lake map	Lake Type	Muskie	Northern Pike	Walleye	LM bass	SM bass	Panfish	Trout	Catfish	Sturgeon	Exotic Species
Baker Lake T39N R15W S02	20	4		W		SE										
Banach Lake (Kiezer)	16	40	12	BR	X	SE										
Barrens Springs No. 1	3	6				SP		C				P	A	P		
Barrens Springs No. 2	1	1		NW		SP						P	P			
Bartash Lake	22	21				SE		P		P		C				
Bashaw Lake	171	16	7	BR	X	DG		C		P		P				
Bass Lake T37N R18W S17	43	45				SE		P		P		P				
Bass Lake T38N R15W S09	110	18	5		X	SE		P		P		P				
Bass Lake T38N R15W S25	39	34				SE				P						
Bass Lake T39N R14W S24	31	27		W		SE				P		P				
Bass Lake T39N R16W S23	226	24	11		X	SE		P		P	P	P				
Bass Lake T40N R15W S23	42	8				SE						C				
Bass Lake T40N R17W S13	236	6	4		X	SE		P		P		C				
Bass Lake T41N R14W S03	30	35		W		SE		P		P		C				
Bass Lake T41N R16W S13	67	21	8		X	SE				C		C				
Behr Lake	38	15				SE		P		P		P				
Benoit Lake	297	41	17	BR	X	SE	P	C	P	C	P	P				
Berg Lake	42	45				SE				P	C		P			
Big Bear Lake	189	17	7		X	SE		C		P		P				
Big Doctor Lake	212	9	6	BR	X	SE		C		C		P				
Big McKenzie Lake	1,185	71	19	BR	X	DG	A	A	A	C	P	C			P	
Big Sand Lake	1,400	55	9	BR	X	SE	A	A	A	A	P	C				
Birch Island Lake	838	13	6	BR	X	SE	C		A	A		C				
Black Lake	11	6				SE										
Blomberg Lake (Bloomberg)	68	4				SE										
Bluff Lake	51	23				SE		P		P		P				
Bogey Lake	24	20				SE		C		P		P				
Boner Lake	89	15	9	BR	X	SE		P		P		A				
Bradley Lake	6	15		W		SE				P		P				
Bricher Lake	27	25				SE		P		P						
Briggs Lake	55	13	4	BR	X	DG	A		P			C				
Buck Lake T37N R14W S14	18	31				SE										
Buck Lake T39N R15W S26	67	6	4		X	SE		P		P		P				
Buffalo Lake	69	4				SE		P				P				
Burlingame Lake	57	19	10	BR	X	DG		A	A			A				
Cadotte Lake	127	21	10	NW	X	SE		P		P	A	P				
Chase Lake	6	30				SE										
Clam Lake, Lower	337	14	7	BR	X	DG	A	P	C	P	P	C		P	P	
Clam Lake, Upper	1,207	11	5	BR	X	DG	A	P	C	C	P	C		P	P	
Clam River Flowage	359	29	11	BR	X	DG	A	P	C	C	P	C		C	P	
Clear Lake	115	55	24	R	X	SE	P	P	A			P				
Clubhouse Lake	25	26				SE				P		C				
Connors Lake	113	16	7	BR	X	SE	A		C	C		C				
Corwick Lake	6	25				SE			C	C		P				

**BURNETT COUNTY**

continued

Lake	Area	Maximum Depth	Mean Depth	Public Access	Lake map	Lake Type	Muskie	Northern Pike	Walleye	LM bass	SM bass	Panfish	Trout	Catfish	Sturgeon	Exotic Species
Cranberry Lake T38N R15W S05	79	23				SE		P		C		P				
Cranberry Lake T40N R14W S04	14	2				SE										
Cranberry Lake T41N R16W S35	82	26	6	NW		DG		C	P	C		P				
Crescent Lake	36	11		R		SE		C		C		P				
Crooked Lake T38N R16W S08	180	10	6	BR,P	X	SE		C		A		A				
Crooked Lake T40N R15W S07	254	13	6	BR	X	SE		P		P		P				
Crystal Lake	32	5		NW		SE						P				
Culbertson Lake	28	34		T		DG		A		C		A				
Culbertson Springs	8	9		BR		SP		P					P			
Dahlberg Lake T40N R15W S30																
Danbury Flowage	256	10		BR		DG	C	C	C	C	P	C		P		P
Deep Lake	34	58				SE				C		P				
Deer Lake	157	23	14	W	X	SE		P		P		P				
Des Moines Lake (Sucker)	229	37	23	BR	X	SE	P	P	P	C		P				
Devils Lake	1,001	24	14	BF	X	SE		C	A	C		P				
Doctor Lake	64	7	5	R		SE		P				A				
Dogtown Springs	6	8		NW		SP							C			
Dubois Lake	71	25	8			SE		C		P		C				
Dunham Lake	243	63	35	BR	X	DG		C	C	A		P				
Durand Lake	29	6				SE										
Eagle Lake T40N R14W S26	22	3				SE										
Eagle Lake T41N R15W S34	71	15	9	NW	X	DG		P		C		P				
Echo Lake	24	9		NW		SE				C		P				
Elbow Lake	233	8	4	T	X	SE				C		C				
Falk Lake	82	32	11	BR	X	DG		C	P	A		C				
Fawn Lake	30	14				SE		P		P		C				
Fenton Lake	17	8		T		SE						C				
Fern Lake*	17	7				SE										
Ferry Lake	16	36				SE				P						
Fish Lake T38N R16W S06	94	7	4	BR	X	SE				P		P				
Fish Lake T40N R14W S04	356	29	10	BR	X	SE	P	A	C	A		C				
Freedom Lakes*	106	4	3		X	DG										
Fremstadt Lake	88	22	7		X	SE		C		C		C				
Frog Lake (Prinel, Prinell)	22	2		BR		SE		C		P						
Gabrielson Lake (Gabelson)	38	35				SE		P		P		A				
Gaslyn Lake	164	12	6	BR	X	DG		C		P		P				
Glendenning Lake	20	3				SE										
Godfrey Lake	56	41	8	BR	X	SE		C		P		P				
Goose Lake	68	6	3	BR	X	SE		P				P				



**BURNETT COUNTY**

**continued**

Lake	Area	Maximum Depth	Mean Depth	Public Access	Lake map	Lake Type	Muskie	Northern Pike	Walleye	LM bass	SM bass	Panfish	Trout	Catfish	Sturgeon	Exotic Species
Grass Lake*	56	3				DG										
Green Lake	274	6	4	T	X	SE		P		C		C				
Greenwood Lake	7	6		T		SE										
Gull Lake	182	19	4	T	X	DG		C	P	C		C				
Ham Lake	324	29	9	R	X	SE		C	P	C		C				EI
Hanscom Lake	127	7	5	T	X	SE		P		A		P				
Hayden Lake	59	12				SE	P	P		P		P				
Holmes Lake	54	26	13	T	X	SE		P		P		P				
Horseshoe Lake	17	29				SE		P		P		P				
Hunters Lake	63	5				SE										
Indian Lake	17	15				SE		P		P		C				
Isaac Lake	17	22				SE						P				
Island Lake	23	56				SE		P		P		A				
Johnson Lake T40N R16W S23	397	23	6	T	X	SE		C		C		C				
Johnson Lake T41N R15W S24	28	7		BR		SE				P		P				
Kapes Lake (Miller)	22	3		W		SE										
Keizer Lake	24	4	3	BR	X											
Kent Lake	31	16		NW		SP		P		C		P				
Kreiner Lake	65	2		W		SE										
Lang Lake	85	4				SE		P		C		P				
Lang Lake, North	16	10		BR		DG		C		P		A				
Larson Lake	31	12				SE		P		C		P				
Lily Lake T39N R15W S06	15	44				SE		P		C		C				
Lily Lake T41N R14W S34	187	21	5	BF	X	SE		P		C		C				
Lind Lake	42	19				SE				P		P				
Lindy Lake	56	14				SE		P		P		P				
Lipsett Lake (Lipsie)	393	24	13		X	DG	P	A	C	C		C				
Little Bass Lake T38N R15W S24	10	12				SE		P		C						
Little Bass Lake T38N R15W S36	11	30				SE		P		C			P			
Little Bass Lake T40N R16W S22	34	12				SE		P		C		P				
Little Bear Lake	128	55	27	BR	X	SE		P		A		P				
Little Deer Lake	14	4		W		SE										
Little Dunham Lake	11	33				SE		P		P		C				
Little Holmes Lake	23	8				DG		P		P		P				
Little Mallard Lake	24	6		W		SE										
Little McGraw Lake	55	12	6	BR	X	SE		C	P	A		C				
Little Round Lake	13	40		BR		SE				P		P	C			
Little Wood Lake	207	23		BR	X	DG		A		C		P				
Little Yellow Lake	348	21	10	NW	X	DG	C	C	C	C	P	C		P		P

**BURNETT COUNTY**

**continued**

Lake	Area	Maximum Depth	Mean Depth	Public Access	Lake map	Lake Type	Muskie	Northern Pike	Walleye	LM bass	SM bass	Panfish	Trout	Catfish	Sturgeon	Exotic Species
Lone Star Lake (Saunders)	23	40				SE		P		P		C				
Long Lake T38N R16W S16	318	13	5	NW		DG		C		C		C				
Long Lake T41N R14W S28	251	41	18	BR	X	SE		P	P	C		C				
Long Lake T41N R16W S33	49	14		W		SE		P		P		C				
Loon Lake T40N R15W S01	228	28	10	BR	X	SE		P		P		P				
Loon Lake T41N R15W S36	89	10		B R		DG		C		C		C				
Lost Lake T39N R14W S02	21	3				SP										
Lost Lake T39N R15W S27	34	2				SE										
Lost Lake T41N R14W S26	248	4		BR		SE		P				P				
Love Lake	253	65	22	NW	X	DG		P	P	C		P				
Lucerne Lake	40	21		W		SE		P				P				
Mallard Lake	113	35	14	W	X	SE		P	P	C		P				
Mallard Slough	25	4				SE										
McElroy Lake	7	16		W		SE						P				
McGraw Lake	135	25	13	BR	X	SE		P		P		A				
McKenzie Lake, Middle*	530	45	20		X	DG	C	C	C	C		A				
Meeker Run Lake	18	1		BR		SE										
Memory Lake	10	6		W		DG		P		P		P				
Minerva Lake	222	26	14	BR		DG		P	P	C	P	C				
Mingo Lake	16	9				SE				P						
Miniature Lake	38	69				SE				P		P				
Minnow Lake	57	50	28		X	SE		P		P		C				
Mollete Lake	25	4		W		SE										
Money Lake	46	3				SE										
Monson Lake T39N R18W S04																
Mud Hen Lake	563	66	14	BR	X	SE		C		A		C				
Mud Lake T40N R16W S26	163	3				SE		P		P		P				
Mud Lake T41N R15W S34	26	7		NW		SE		P		P		P				
Muskrat Lake	9	14				SE						P				
Myre Lake	128	27	8			SE		A		A		A				
Myrick Lake	19	12		W		SE		P		C		A				
Mystery Lake	26	51	19	R	X	SE				A		A				
Nicaboyne Lake (Nicafoyne)	291	34	12	BR	X	SE		C		C		A				
No Mans Lake*	70	23	7	BR	X	SE		C		C		A				
North Lake	33	22	6	T	X	SE		P		P		P				
Oak Lake	227	19	8	R	X	SE		P		A		P				
Our Lake	9	12				SE				P		P				
Owl Lake	127	27	7	W	X	SE		P		P		C				
Peacock Lake	14	13		W		SE						P				
Perch Lake	16	27				SE				P		P				
Peterson Lake	24	11				SE		P		C		A				
Peterson Lake (Big)	94	16	7	T	X	SE		P		P		P				
Phantom Flowage T39N R19W S36	1480					DG										

**BURNETT COUNTY**

continued

Lake	Area	Maximum Depth	Mean Depth	Public Access	Lake map	Lake Type	Muskie	Northern Pike	Walleye	LM bass	SM bass	Panfish	Trout	Catfish	Sturgeon	Exotic Species
Phernetton Lake	61	5				SE				P		P				
Pickle Lake	20	20				SE		P		P		P				
Pike Lake	77	15	7			SE		P		P		P				
Pine Lake T37N R18W S22	51	46	20		X	SE		P		P		C				
Pine Lake T40N R15W S25	89	19	5			SE		P		P		C				
Places Lake	13	13				SE										
Point Lake	144	7				SE				P		P				
Pokegama Lake	160	28	4	BR	X	SE		P	P	P		P				
Poquettes Lake (Little Long)	97	23	10	BR	X	SE		C	C	A		P				
Pratt Lake	21	4		W		SE										
Prinel Lake (Frog)	64	12	7	BR	X	SE		P		P		C				
Put Lake	19	3				SE										
Rahn Lake	4	3		T		SE										
Rice Lake T37N R18W S10	83	13				SE		P		P		P				
Rice Lake T37N R18W S25	50	5				SE		P		C		P				
Rice Lake T39N R14W S10	326	10	4	BR	X	DG	P	C	P	C		C				
Richart Lake	17	3		W		SE										
Robie Lake	31	14		NW		DG		P		P		P				
Rohr Lake	12	5				SE						A				
Rooney Lake	322	30	10	BR	X	SE		C	P	A		C				
Round Lake T37N R18W S27	204	27	15	BR	X	DG		C	C	C	P	C				E
Round Lake T39N R15W S03	27	5		W		SE										
Round Lake T41N R16W S33	56	11		BR		SE		P	P	P		A				
Saginaw Lake	13	19		BR		SE				P		P				
Sand Lake T38N R16W S22	81	42	17	R		SE		P		P		P				
Sand Lake T40N R15W S25	962	73	24	BR	X	SE		A	C	C		P				
Sanks Lake	39	4				SE										
Shallow Lake*																
T37N R13W S31	92	30		BR		SE		C		C		C				
Shoal Lake	247	5	3			SE		P				P				
Silver Lake T38N R16W S22	64	67	24			SE				P		P				
Silver Lake T38N R18W S36	33	35				SE		P		P		P				
Smith Lake	26	22				SE		P			P	P				
Spencer Lake (Spence)	188	19	10	W	X	SE		A		C		A				
Spirit Lake	593	27	12	BR	X	DG		C		C		C				
Spook Lake	18	40				SE		P		P		P				
Spring Brook Springs	5	11				SP								A		
Spring Lake (Clam R Springs)	9	7				SP		P						C		
Staples Lake	85	42	17	W		SE		P		P		P				
Stone Lake	34	11		W		SE				P		C				
Stulen Lake	20	14				SE		C		P		P				
Sunfish Lake	9	41				SE				P		P				
Swamp Lake T38N R16W S30	39	3				SE										
Swamp Lake T39N R15W S11	21	5		W		SE										

**BURNETT COUNTY**

continued

Lake	Area	Maximum Depth	Mean Depth	Public Access	Lake map	Lake Type	Muskie	Northern Pike	Walleye	LM bass	SM bass	Panfish	Trout	Catfish	Sturgeon	Exotic Species
Tabor Lake (Loon)	157	28	13	BR	X	SE		C		P		P				
Tamarack Lake	13	3		W		SE										
Tanda Lake	39	4				SE						P				
Taylor Lake	80	10	6	BR	X	SE		P		P		A				
Temple Lake	18	6		W		SE										
Thatcher Lake	23	41				SE		P		P		C	P			
Thirty-Two Lake	22	17		R		SE		P		P		P				
Tomoe Lake	67	6	4	W	X	SE						P				
Trade Lake, Big (Little Trade)	434	39	15		X	DG	P	C	P	A		C				
Tucker Lake	47	2				SE										
Twenty-Six Lake	230	45	20	BR	X	DG	C	C		C		C				
Twenty-Six Lake Springs	3	8		NW		SP										
Twin Lake, Lower	123	9				SE		P		P		P				
Twin Lake, North	27	26				SE		P		C		P				
Twin Lake, South	19	25				SE		P		C		P				
Twin Lake, Upper	163	18	5	W		SE		A				A				
Unnamed																
T37N R18W S12-13	26	7				SE										
T37N R18W S15-6	24	25				SE										
T38N R15W S7-10	22	5				SE										
T38N R17W S25-16	33	5		R		SE				P		P				
T39N R15W S5-6	23	3				SE										
T39N R16W S13-13	24	3				SE										
T40N R14W S17-13	20	3				SE										
T40N R14W S23-10	22	6				SE										
T40N R14W S23-15	25	11				SE										
T40N R14W S36-15	61	7		NW		DG		P		C		P				
T40N R15W S19-10	23	3				SE										
T40N R15W S25-16	23	6		W		SE										
T40N R16W S13-6	24	7				SE										
T40N R16W S25-14	22	13				SE				P		P				
T41N R14W S36-7	32	4		W		SE										
Viola Lake	285	34	13	BR	X	SE		C	P	C		P				
Ward Lake	18	21				SE				P		P				
Warner Lake	176	75	19	R	X	SE		C		C		A				
Webb Lake (Web)	761	31	14	BR	X	DG		C		C		A				
Wilson Lake	10	13				SE						P				
Wood Lake	521	35	16	BR	X	DG		C		C		A				
Yellow Lake	2,287	31	19	BF	X	DG	A	C	A	P	P	C		P	P	

<b>PIERCE COUNTY</b>																		
Lake	Area	Maximum Depth	Mean Depth	Public Access	Lake map	Lake Type	Muskie	Northern Pike	Walleye	LM bass	SM bass	Panfish	Trout	Catfish	Sturgeon	Exotic Species		
<b>PIERCE COUNTY</b>																		
Dead Slough Lake	300	**																
Gantenbein Lake	88	5				DG						P						
George Lake (Spring Valley)	126	29		BR		DG		P		C		C	P					
Goose Lake	104	**																
Kinnickinnic Pond, Lower	15	13				DG												
Kinnickinnic Pond, Upper	18	9				DG						P	C					
Mud Lake (Upper)	400	**																
Nugget Lake	116	50		BR					P	C		C						
River Falls Pond	1	5				DG							P					
St Croix Lake	4,668	60		BR		DG	P	P	C	P	C	P		P	P			
Unnamed																		
T24N R18W S03-15	26	5				SE												
T25N R18W S30-01	22	2				SE												
T25N R18W S30-15	40	5				DG												

\*\* Part of Mississippi backwaters. Depth is unable to be obtained based on fluctuating water levels.

<b>POLK COUNTY</b>																		
Alabama Lake (Long)	98	28	7	T	X	SE		P		P			P					
Andrus Lake (Little Round)	25	12				DG		P		P			P					
Antler Lake (Pine)	101	22	9	BR	X	SE		C		C			P					
Apple River Flowage	639	18	6	BR	X	DG	C	C		C			A					
Aspen Lake	11	13				SE												
Baker Lake T38N R16W S36	22	9				SE												
Balsam Lake	2,054	37		BR	X	SE		C	C	C			C					
Barbo Lake	44	4	2	T	X	SE		C		C	P		C					
Barneys Lake	6	7				SE												
Bass Lake T36N R15W S31	138	19	6	T	X	SE		P		P			P					
Bass Lake T36N R19W S23 (Sterling)	78	26	8	T	X	SE		P		P			P					
Bass Lake Springs	6	8				SP								P				
Basswood Lake (Bass)	22	10				SE												
Bear Lake	160							P		P			P					
Bear Trap Lake	241	25	17	BR	X	DG	P	P	C	C			C					
Beautiful Lake	30	17				SE		P		P			C					
Beede Lake	3	10				SE												
Big Blake Lake (Beautiful)	217	14	9	BR	X	DG	P	P	P	C			C					
Big Butternut Lake	378	19	13	BR,P	X	DG		C	C	C			C					
Big Lake	259	24	17	BR	X	SE		P	P	C			C					
Big Round Lake	1,015	17	10	BR	X	SE	P	P	C	C			A					
Black Lake*	11	6				SE												
Black Brook Flowage	98	23	7	BR	X	DG	P	C		C			C					

**POLK COUNTY**

continued

Lake	Area	Maximum Depth	Mean Depth	Public Access	Lake map	Lake Type	Muskie	Northern Pike	Walleye	LM bass	SM bass	Panfish	Trout	Catfish	Sturgeon	Exotic Species
Black Brook Springs	1	3				SP										
Blom Lake (Bloom)	208	13	5	R	X	DG		P		P		P				
Bone Lake T32N R16W S27	30	5				SE										
Bone Lake T35N R16W S06	1,781	43	23	BR	X	DG	C	C		C		C				
Briar Lake	13	6				SE										
Bridget Lake (Mud)	95	7	3	NW	X	DG	P	P		P		P				
Brusher Lake	67	17		R		SE				P		P				
Bullhead Lake	7	7				SE										
Camelia Lake	60	6	4	BF	X	SE		P		P		P				
Camp Douglas Lake	10	4				SE										
Cedar Lake*	1,107	28		BR	X	DG	C	C	A	P		P				
Center Lake (Big)	65	12				SE		P	P	P		P				
Church Pine Lake (Pine)	107	45	23	BR	X	DG		P	P	C		C				
Clam Falls Flowage	127	14	6	BR	X	DG		C		C		C				
Clara Lake	56	71	22		X	SE		P		P		P				
Clarey Lake (Twin)	34	49	18	BF	X	SE				P		P		C		
Clauson Lake	11	6				SE										
Clear Lake	30	26	13	BR	X	SE		C	P	C		A				
Clover Lake	17	6		T		SE										
Coon Lake	54	16	10	BR	X	SE		C		C		C				
Crescent Lake (Pickerel)	19	45	15	BR	X	SE						C		P		
Crooked Lake	12	6				SE										
Dace Lake (Mud)	11	15				SE				P						
Dahl Lake	32	10				SE										
Deer Lake T34N R17W S29	807	46	26	BR	X	DG	C	P	P	C		C				
Deer Lake T35N R19W S15	4	15				SE										
Deer Lake T36N R15W S23-13	16	5				SE										
Denny Lake	12	8				SE										
Depot Lake	3	8				SE										
Deronda Lake (Mud)	19	12		T		DG		P		P		P				
Diamond Lake	126	15		BR		SE		P	P	P		P				
Dinger Lake	16	16	7	T	X	SE		P		P		P				
East Lake T34N R16W S18 (Volga)	73	6				SE										
East Lake T35N R17W S33	15	8				SE										
Elbow Lake*	233	8	4	T	X	SE				C		C				
Elkins Lake	38	15		W		SE										
Ellofson Lake	9	6				SE										
Ember Lake	13	6				DG										
Evergreen Lake (Deer)	16	8				SE										
Fern Lake	17	7				SE										
Fish Lake, South	75															
Footes Lake	55	8				SE										

**POLK COUNTY**

continued

Lake	Area	Maximum Depth	Mean Depth	Public Access	Lake map	Lake Type	Muskie	Northern Pike	Walleye	LM bass	SM bass	Panfish	Trout	Catfish	Sturgeon	Exotic Species
Forsythe Lake	30	12				DG		P		P		P				
Fountain Lake	24	20				DG										
Freedom Lakes	106	4	3		X	DG										
French Lake	15	11				DG				P		P				
Gabrielson Lake*(Gabelson)	38	35				SE		P		P		P				
Garfield Lake (Big Horseshoe)	120	8	6	T	X	SE				P		P				
Gibson Lake	43	12		T		SE										
Gilbert Lake	14	14				SE				P		P				
Glovers Lake	18	7				SE										
Godfrey Lake	23	15				DG		P				P				
Grandquist Lake	7	10				SE										
Grass Lake	56	3				DG										
Greeley Lake	17	6				SE										
Grenquist Lake (Greenquist)	58	30	13	BR	X	SE		P		P		C				
Grimhs Lake	31	43				SE		C		C		C				
Grouse Lake	23	10				SE										
Half Moon Lake	579	60	25	BR	X	DG		C	C	C		C				
Hamble Lakes (Twin)	15	74	25	R	X	SE				P		C				
Hatchet Lake	17	15				SE										
Hawthorn Lake	12	6				SE										
Herby Lake (Lanesdale, Twin)	69	36	16		X	SE		C		C		C				
Hickory Lake	18	14				SE										
Highland Lake	11	3				SE										
Hoover Lake	4	52				SE										
Horse Lake	228	11	6	BR	X	DG		P		P		P				
Horseshoe Lake (Jensen)	35	8		BR		SE			P	P		P				
Horseshoe Lake*																
T34N R14W S06	377	57	20		X	SE		C	P	C						
Ice House Lake	6	35	14	T	X	SE							C			
Ice Lake	20	11				SE										
Indianhead Flowage	776	57	11	BR	X	DG		P	C	P	C	P				
Island Lake T32N R16W S30	32															
Island Lake																
T32N R18W S05-04	20															
Joel Flowage	65	8		T		DG				P		P				
Johansen Lake (Johnson)	32	19				SE				C		P				
Johnson Lake																
T36N R15W S26	38	12				SE										
Kenabee Lake	29	7				SE										
Kenny Lake	6	7				SE										
King Lake (Pine)	49	14		T		SE		P		P		P				
Knapp Flowage	35	12				DG										
Knife Lake	7	55				SE										
Lake Evelyn	3	20				DG										

**POLK COUNTY**

continued

Lake	Area	Maximum Depth	Mean Depth	Public Access	Lake map	Lake Type	Muskie	Northern Pike	Walleye	LM bass	SM bass	Panfish	Trout	Catfish	Sturgeon	Exotic Species
Lake O'The Dalles (Thaxter)	23	12		TP		SE		C	P	P		C				
Lake Round (Dwight)	67	26	15	BR	X	DG		P		P		P				
Lamont Lake	96	28	10		X	SE				P		P				
Land Lake	10	5				SE										
Largon Lake	129	10	6	BR	X	DG		C		C		C				
Larsen Lake	21	8				SE										
Laurel Lake	14	6				SE										
Lee Lake	8	6				SE										
Lees Lake	5	7				SE										
Legoo Lake	2	8				SE										
Lincoln Lake	11	3				SE										
Little Bass Lake	21	15		NW		SE				P		P				
Little Blake Lake	85	10		BR	X	DG	P	P	P	C		C				
Little Butternut Lake	189	23	8	BR	X	DG		C	P	C		C				
Little Horseshoe Lake T34N R15W S11	54	28	7		X	SE		P		P		P				
Little Horseshoe Lake T35N R18W S06	8	6				SE										
Little Largon Lake	19	29				SE		P		P		P				
Little Mirrow Lake (Pickerel)	33	13	10		X	SE		P	P	C		A				
Little Pine Lake	54	10				SE		P		P		P				
Little Round Lake	67	8		NW		DG		C		C		C				
Little Ward Lake	18	7				SE										
Lone Pine Lake	17	20				SE				P		P				
Long Lake T35N R15W S25 (Helbig)	65	44	17	T	X	SE		P		P		P				
Long Lake T32N R16W S27	20	3				SE										
Long Lake T34N R17W S06	272	17	11	BR	X	SE		C		C		C				
Long Trade Lake	153	13	8	BR	X	DG		C		C		C				E
Lost Lake T35N R16W S15	60	15				DG		P		P		P				
Lost Lake T35N R17W S24	10	6				SE										
Lotus Lake (East) T33N R18W S21	246	15	7	BR	X	DG		P		P		P				
Loveless Lake (Bass)	141	20	15	BR	X	DG		P		C		C				
Lykens Lake	19	10		T		SE										
Mackie Lake	34	5				SE										
Magnor Lake (Richardson)	231	26	10	BR	X	SE		C	C	C		C				
Manitou Lake	17	10				SE		P				P				
Mansen Lake	18	12		T		SE										
Margaret Lake	43	17		T		SE		P		P		P				
Markee Spring	2	10		T		SP							C			
Marlpit Spring	5	7				SP							P			
Marsh Lake	4	4				SE										
Martel Lake	39	20				SE										



**POLK COUNTY**

**continued**

Lake	Area	Maximum Depth	Mean Depth	Public Access	Lake map	Lake Type	Muskie	Northern Pike	Walleye	LM bass	SM bass	Panfish	Trout	Catfish	Sturgeon	Exotic Species
McKeith Lake	72	8		R		SE		P	P			P				
McKenzie Lake	60	25	9	T	X	DG		C	C			C				
Meadow Lake (Bog)	7	51				SE										
Miller Camp Lake	12	10				SE										
Moccasin Lake (Long)	55	31	16		X	SE		P	P			P				
Mud Lake T33N R15W S26	7	3				SE										
Mud Lake T33N R18W S35	43	12				SE		P	P			P				
Mud Lake T34N R15W S01	55															
Mud Lake T34N R16W S18	10	4				SE										
Mud Lake T36N R15W S23	15	7				SE										
Mullins Lake	7	21				SE		P	P			P				
Nimon Lake (Niemon)	17	6		W		SE		P	P			P				
North Fish Lake (Fish)	56	4				SE										
Orr Lake (Ore)	25	12				DG			P			P				
Osceola Lake	38	14				DG		P	P			P				
Otter Lake	20															
Palmer Lake	15	2				SE										
Parker Lake	10	8				SE										
Paulsen Lake (Alden)	26	21		BR		SE		A	A			A				
Paulson Lake	26	12				SE		P	P			A				
Peaslee Lake	23	2				DG										
Pike Lake	159	33	14	BR	X	SE		C	P	C		A				
Pine Island Lake	16	7				SE										
Pine Lake T33N R17W S15 (Larch)	46	6				SE										
Pine Lake T32N R18W S23	82	34	10	BR	X	SE		P	P			P				
Pine Lake T36N R16W S24	153	53	19		X	SE		P	P			C				
Pine Lake, Lower	90	102	40	BR	X	SE		P	C			C		P		
Pipe Lake	290	68	27	BR	X	SE		C	C	P	C	C				
Pipe Lake, North	55	37		NW	X	SE		C	C	P	P	C				
Pleasant Lake	45															
Pogo Lake (Big)	14	17				SE		P	P			P				
Poplar Lake	125	34	12	BR	X	SE		P	P	C		A				
Rhinstad Lake	9	17				SE										
Rice Lake T32N R18W S11	98	6	4	NW	X	DG		P	P			P				
Rice Lake T33N R19W S15 (Cattail)	57	3			NW	DG										
Rice Lake T35N R17W S21 (Glenton)	128	10	3	BR	X	DG		P	P			P				
Rice Lake T35N R19W S11	4	18				SE										
Roger Lake	17	12			NW	DG		P	P			P				
Round Lake T34N R18W S36	10	6				SE										
Round Lake T35N R15W S23 (Heath)	23	20				SE										

**POLK COUNTY**

continued

Lake	Area	Maximum Depth	Mean Depth	Public Access	Lake map	Lake Type	Muskie	Northern Pike	Walleye	LM bass	SM bass	Panfish	Trout	Catfish	Sturgeon	Exotic Species
Round Lake																
T36N R18W S31 (Cushing)	39	38				SE		P		P		P				
Sand Lake	187	58	25	BR	X	SE		P	C	C		P	C			
Sandhill Lake (Sand)	44	12		BR		SE				P		P				
Sedge Lake	20	3				DG										
Shiloh Lake	19	12		NW		DG		P		P		P				
Silver Lake	28	26		W		SE		P		P		P				
Simpson Lake	5	5				SE										
Skinaway Lake*	37	10		R		SE				P		C				
Snake Lake T32N R16W S15	1	11				DG										
Snake Lake T34N R15W S03	14															
Snowshoe Lake	13	8				SE										
Somers Lake	101	12	5	BR	X	DG		P		P		P				
Spur Lake (Little Pine)	61	10	3		X	SE				P		P				
Square Lake	35	11	5		X	SE				P		P				
Staples Lake*	305	17	10	BR	X	DG		C	C	C		C				
Straight Lake	107	12		NW		DG		P		P		P				
Surprise Lake	14	3				SE										
Swede Lake	68	32	13	W	X	SE				P		P				
T Lake	11	45				SE				P		P				
Tarbert Lake (Tabor, Twin)	42	20	9	BR	X	SE				P		P				
Toby Spring	1	6				SP							C			
Trident Lake (Pine, King)	43	7				SE										
Tula Lake	15	5				SE										
Tuttle Lake	10	2				SE										
Twenty-Ninth Lake	29	7				SE										
Twin Lake	10	22				SE				P		P				
Twin Lake, East	60															
Twin Lake, North	135	27	11	BR	X	DG		C	P	C		A				
Twin Lake, South	74	9	5	BR	X	DG		P		P		C				
Twin Lake, West	40															
Unnamed																
T34N R15W S01-11	40															
T35N R17W S16-15	20	8				DG				P		P				
T36N R16W S18-01	41	5				SE										
Vincent Lake	70	15	9	BR	X	SE		P	P	P		P				
Wallin Lake	8	7				SE										
Wapogasset Lake	1,186	32	17	BR	X	DG	P	P	C	C		C				
Ward Lake	91	43	16	BR	X	SE		C	C	C		C				
Weiss Lake	9	7				SE										
White Ash Lake	153	9	6	BR	X	DG		C		C		C				
White Ash Lake, North	119	9	5	BR	X	DG		P		P		C				
Wild Goose Lake	182	12	8	BR	X	SE		P		P		P				
Wind Lake (Round)	38	7		T		DG		P	P	C		C				

**POLK COUNTY**

continued

Lake	Area	Maximum Depth	Mean Depth	Public Access	Lake map	Lake Type	Muskie	Northern Pike	Walleye	LM bass	SM bass	Panfish	Trout	Catfish	Sturgeon	Exotic Species
Wintergreen Lake	32	12				SE										
Wolf Lake	72	22	11		X	DG		P		P		P				
Woodsman Lake (Mud)	31	9				SE		P		P		P				
Young Lake	30	10				SE										
<b>PORTAGE COUNTY</b>																
Adams Lake	30	51	17	BR	X	SP				C		P		P		
Amherst Millpond	48	5	2	T	X	DG		P				P				
Anderson Lake	12	6				DG						P				
Bakers Lake (Becker)	32	4		W		SE										
Bass Lake (Claudes)	55	16			X	SE						A				
Bear Lake	34	36	7	BR	X	SE				C		A				
Bentley Pond (Dana Pond)	86	5	2	NW	X	DG		P				A				
Bingo Lake	6	16			X	SE		P				C				
Biron Flowage*	2,126	23		BR		DG	P	P	C	P	C	P		P	P	
Boelter Lake (Marshfield)	14	5		T		SE						C				
Budesberg Lake (Severson)	25	58			X	SE				C		C				
Clar-Re Lake	17	15				SE										
Collins Lake (Fish)	49	30	21	BR	X	SE		P	P	C		P				
Deans Lake	6	23			X	SP				P		C				
Dubay Lake	6,700	30		BR		DG	P	C	A	P	C	C		C		E
East Lake (Wolf)	18	2			X	SE										
Ebert Lake	12	29	10	NW	X	SP				C		C		P		
Ell Lake (L Lake)	28	15			X	SE										
Emily Lake	105	36	16	BR	X	SE		C	C	C		C		P		E
First Lake	12	4				SE										
Fountain Lake	15	23		BR	X	SP				C		A				
Glisezinski Lake (JAQUELINE)	40	17	4	R	X	SE			P		P			P		
Goin Lake (Cow)	20	7				SE						C				
Helen Lake	78	18	8	BR	X	DN		P		C		C				
Hintz Lake	51	5			X	SE										
Jim Lake	4	15				SE										
Johnson Lake	4	7				SP										
Jordan Pond	84	10	4	BR	X	DG		P		P		C				
Julia Lake (Wards)	14	4				SE										
Kranski Lake (Kraneks)	17	33				SP				C		A				
Lime Lake	45	31		BR	X	SE		P		C		A				
Little Eau Pleine Flowage	495	8				DG	P	P	P		P	C				
Lions Lake (Kilobassa)	39	6	5		X	DN		P		C		C				
McDill Pond	261	15	5	BR	X	DG		P		C		C				E
Meyers Lake	18	11	7	BR	X	SE		P		P		P				
Minister Lake (Preacher)	16	9			X	SE										
Mud Lake T23N R09E S13	5	22				SE										
Mud Lake T23N R10E S36	4	17				SP										

<b>WALWORTH COUNTY</b>																
Lake	Area	Maximum Depth	Mean Depth	Public Access	Lake map	Lake Type	Muskie	Northern Pike	Walleye	LM bass	SM bass	Panfish	Trout	Catfish	Sturgeon	Exotic Species
Green Lake (Lauderdale Lakes)	311	55		BR	X	SP		C	P	C		C				EZ
Hilburn Pond	9	4	3	R	X	DG		P				C				
Honey Lake (Vienna)	44	6	2	T	X	DG		P		P		C			P	E
Ivanhoe Lake (Ryan)	42	10	5	T	X	DG		P		P		C				E
La Grange Lake	55	4		W		SE										
Lake Benedict*	78	38	16	BR	X	DN		P		A		C				EZ
Lorraine Lake (Lake #9)	133	8		BR	X	SE				P		C				E
Lulu Lake	84	40	24	NW	X	DG		C		C		C				E
Middle Lake (Lauderdale Lakes)	259	42		BR	X	DG		C	P	C	P	C				EZ
Mill Lake (Lauderdale Lakes)	271	44		BR	X	DG		C	P	C	P	C				EZ
North Lake (Holden)	191	11		R	X	SE		P		P		A				E
Number Ten Lake	34	3				SE										
Pell Lake	86	13	4	BR	X	SE		P		P		P				E
Peters Lake	64	8	3		X	SE		P		P		P				E
Pickereel Lake	30	31	14	NW	X	SP		P		P		C				E
Pleasant Lake	155	29	12	BR	X	SP		P	P	A		P				EZ
Potter Lake	162	26	8	BR	X	SE		C		A		A				EZ
Powers Lake*	459	33	16	BR	X	DG		C	P	A	P	C				EZ
Rice Lake (Lower Whitewater)	137	10		BR		DG		P		P		C				E
Silver Lake	85	3	3	T	X	SE										E
Swan Lake (Mud)	27	7	3		X	SP				P		C				
Swift Lake	19	8	4		X	SE				P		C				E
Tombeau Lake	35	26	13	BR	X	DG		P		C		C				EZ
Tripp Lake (Trapp)	113	8		BR	X	DG		P		P		C				E
Turtle Lake	140	35			X	SP		P		P		P				E
Wandawega Lake (Otter)	119	8	4	BR	X	SE		C		C		A				E
Whitewater Lake (Bass, Kettle)	640	38		BF	X	DG		P	P	C		A				E
<b>WASHBURN COUNTY</b>																
Adventure Lake	17	36				SE		C		C		C				
Alder Lake	11	32				SE		P		C		C				
Anah Springs	4	17		NW		SP		P				C				
Baker Lake	114	21	8		X	SE		C		P		C				
Balsam Lake	295	49	25	BR	X	DG		C	C	C		A				
Banks Lake	48	7				SE				A		C				
Bashaw Trout Springs	8	8		NW		SP		P				P		C		
Bass Lake T37N R10W S07	130	66	13	W	X	SE			P	C		C				
Bass Lake T40N R10W S17	188	35		BR	X	SE	C		A	C		C				
Bass Lake T40N R13W S29	144	31	18	BR	X	SE	C	C	C	C		A				
Bean Brook Spring	5	9		T		SP							P			
Bean Lake	100	35	16	BR	X	DG		C	P	P		C				

**WASHBURN COUNTY**

Lake	Area	Maximum Depth	Mean Depth	Public Access	Lake map	Lake Type	Muskie	Northern Pike	Walleye	LM bass	SM bass	Panfish	Trout	Catfish	Sturgeon	Exotic Species
Bear Lake*	1,358	87	20	BR	X	DG		C	C	C	P	C				
Beartrack Lake	97	36	11	BR	X	SE		C	C	C		C	A			
Beartrap Lake	20	40		T		SE			C	C		C	P			
Beaver Lake	89	16	8	BR	X	SE		C		C		C				
Beaver Lodge Pond (Cassidy)	4	11		T		SP							A			
Berry Lake (Noble)	43	43				SE		C		A		C				
Big Bass Lake	203	27	15	BR	X	SE		C	C	C		C	C			
Big Casey Lake	247	27	10	BR	X	DG		C	P	C		C	C			
Big Devil Lake (Audubon)	162	75	27	NW	X	DG		C	P	C		C	C			
Big McKenzie Lake*	1,185	71	19	BR	X	DG	A	A	A	C	P	C	C		P	
Birch Lake	368	73	24	BR	X	DG		C	C	C	P	C	C			
Bodins Lake	13	28				SE				C		C	C			
Bond Lake	14	33		NW		SP		P		P		P	P			
Boyle Brook Spring	5	7		T		SP		C	P	P		P				
Bridge Lake	13	11		R		SE										
Brinkman Lake	19	13		T		SE				P		P				
Browns Lake	26	44				DG		C				P	P			
Bughouse Lake	17	7				SE						P	P			
Cable Lake	185	24	7	BR	X	SE		P	C	C		C	C			
Camp Lake	10	35		BR		SE				P		C	A			
Casey Creek Flowage	99	6		BR		DG		P								
Casper Lake	18	19				SE										
Chain Lake T37N R12W S04	25	7				SE				P		P				
Chain Lake T37N R13W S32	24	3				SE										
Chicog Lake	125	25	15	BR	X	DG		C		A		P	C			
Chinty Lake	16	25	10		X	SE				C		C	A			
Chippanzie Lake	58	31	14	BR	X	DG		C	P	C		C	A			
Cloverleaf Lake	40	19	2	T	X	SE				C		C	P			
Colton Flowage	58	22	8	BR	X	DG		P	C	P	C	C	P			
County Line Lake (Line)	63	72	21	T	X	SE				C		C	P			
Cranberry Flowage	201	12		BR		DG		A	P	C		P	P			
Cranberry Lake	19	6		NW		DG		P				P	P			
Crystal Lake	29	29		R		SE		P		A		C	A			
Cyclone Lake	91	18	9		X	SE		A		C		C	A			
Dago Creek Springs	1	5		NW		SP		P					P			
Deep Lake T38N R10W S25	9	20		W		SE				C		C	A			
Deep Lake T38N R11W S18	43	29	13	BR	X	SE	P		C	A		C	A			
Deep Lake T40N R11W S24	17	10				SE						A	P			
Deer Lake T40N R13W S17	102	19		NW	X	DG		P	P	P		C				
Deer Lake T41N R11W S35	22	7				SE										
Derosier Lake	109	11	6	BR	X	SE		C		C		C	P			
Devils Lake	28	7				SE				P		C	P			
Dilly Lake (Dilley)	74	10	5	BR	X	DG		C		C		P				
Dock Lake	47	6	4		X	SE						P				

**WASHBURN COUNTY**

continued

Lake	Area	Maximum Depth	Mean Depth	Public Access	Lake map	Lake Type	Muskie	Northern Pike	Walleye	LM bass	SM bass	Panfish	Trout	Catfish	Sturgeon	Exotic Species
Dugan Lake	53	35	14		X	DG		C	C			C				
Dunn Lake	193	39	18	BR	X	DG		C	C	C		A				
Earl Springs	1	6		W		SP							C			
Elbow Lake	36	25		BR		SE				C		C				
Eliza Lake	27	46				SE				C		A				
Elizabeth Lake	37	24				SE				A		A				
Ellsworth Lake	174	6	4	BR	X	SE		A		C		C	P			
Evergreen Lake	16	8		T		SE						A				
Fawn Lake	9	8		W		SE										
Fenton Lake	139	52	15	BR	X	SE		P	P	A		C				
Fish Lake	12	9		T		SE						C				
Floyd Lake	11	33				SE				C		C				
Gardner Lake	37	15		R		SE		P		C		C				
Gilmore Lake	389	36	16	BR	X	DG		C	C	C		C				
Glendennon Lake	11	7				SE										
Goose Lake T39N R13W S14	70	11	5	BR	X	SE				C		C				
Goose Lake T40N R13W S21	73	3				SE										
Grass Lake	29	4				SE										
Grassy Lake	38	10		T		SE						C				
Green Lake	29	30			X	SE		P		A		C				
Gull Creek Springs	5	4		W		SP		P	P				C			
Gull Lake	511	19	11	BR	X	DG		C		C		A				
Harmon Lake	96	33	9	BR	X	SE		A		C	P	A				
Harrison Lake	17	27	7	W	X	SE				A		A				
Haugen Lake	43	6	4	R	X	SE		P	P	A		A				
Hay Lake	79	9	6	T	X	DG		C		C		A				
Heart Lake	9	12				SE						C				
Hointville Lake	58	23	10		X	SE				C		C				
Holmes Lake	20	6		T		SE										
Horseshoe Lake T38N R10W S03	24	5		R		SE										
Horseshoe Lake T42N R12W S25	194	21	7	BR	X	SE		C	P	C		A				
Horseshoe Spring	5	15				SP							P			
Island Lake	276	44	14	BR	X	SE		C	P	C		C				
Jerry Lake	87	5	3		X	SE		C				C				
Johnson Lake	22	9		T		SE										
Kekegama Lake	110	24	13	BR	X	DG		A		A		A				
Kimball Lake, Lower	129	6	4	BR	X	SE		C		C		C				
Kimball Lake, Middle	98	77	31	NW	X	SE		A		C		A				
Kimball Lake, Upper	44	11	5	NW	X	SE		A		C		C				
King Lake	22	6		W		SE										
Kingelm Lake	57	7				SE										
Kinny Lake (Kinney)	10	27				SE		P			P	P				

**WASHBURN COUNTY**

**continued**

Lake	Area	Maximum Depth	Mean Depth	Public Access	Lake map	Lake Type	Muskie	Northern Pike	Walleye	LM bass	SM bass	Panfish	Trout	Catfish	Sturgeon	Exotic Species
Lakeside Lake	32	8	4	T	X	SE		P	C			C				
Lazy Island Lake	60	52	19		X	SE		C	C	C		A				
Leach Lake	30	32	13	T	X	SE			A	A		A				
Leaman Lake	5	15		T		SE										
Leesome Lake (Bass)	146	53	15		X	SE		C		A		P				
Leisure Lake (Skunk)	75	26	12	BR	X	SE	P	C		A		A				
Leonard Lake	10	5				SE										
Lincoln Lake	101	27	13	BR	X	DG		C		C		C				
Little Bass Lake T40N R13W S31	26	51	17	R	X	SE		C		A		A				
Little Bass Lake T41N R12W S05	73	7	4	NW	X	SE		P		P		C				
Little Cable Lake	45	7				SE										
Little Casey Lake	28	22		NW		DG		C		C		C				
Little Devil Lake (Devils)	56	34	14	BR	X	DN		C	P	C		C				
Little Dugan Lake	3	25		T		SE		P		C		C				
Little Grassy Lake	23	5		T		SE										
Little Kekegama Lake	30	21			X	SE				A		C				
Little Long Lake	112	11	6	T	X	SE		C	P	C		C				
Little Mackay Creek Spring	1	5		R		SP							P			
Little Mud Lake	71	12	4	R	X	DG		P		P		P				
Little Ripley Lake	47	14				SE				C		C				
Little Sand Lake	74	21	12	BR	X	SE		P	C	C		C				
Little Spooner Lake	31	11		R		SE		C		C		C				
Little Stone Lake	27	13	9	BR	X	SE		P	C	C	C	P				
Long Lake	3,290	74	26	BR	X	DG		A	C	C	P	C				
Loon Lake T37N R10W S08	49	46	14	W	X	SE		P		A		C				
Loon Lake T37N R10W S16	46	49	14		X	SE				A		C				
Loon Lake T40N R10W S10	19	18				SE		P		C		C				
Loon Lake T40N R13W S22	56	63	25		X	SE				C		C				
Loon Lake*T43N R11W S36 (Spook)	41	15			X	SE				C		C				
Lost Lake T37N R10W S10	47	11	7	T	X	SE				C		C				
Lost Lake T37N R12W S04	12	21		BR		SE				P		P				
Lost Lake T41N R10W S07	41	10		W		SE		P		P		P				
Loyhead Lake	75	35	11	BR	X	SE				A		C				
Lucky Lake	11	7				SE										
Lutz Lake	19	13		T		DG										
Mack Lake	81	13	8		X	SE		A		C		A				
Mackay Springs	6	8		BR		SP							C			
Macrae Lake	124	45		W		SE				C		C				
Mallard Lake	29	51		W		SE				C		C				
Matson Lake	33	59		W		SE		C		C		C				
Matthews Lake	263	26	12	BR	X	SE	C	C	C	A		A				

**WASHBURN COUNTY**

**continued**

Lake	Area	Maximum Depth	Mean Depth	Public Access	Lake map	Lake Type	Muskie	Northern Pike	Walleye	LM bass	SM bass	Panfish	Trout	Catfish	Sturgeon	Exotic Species
McCune Lake	62	37	7	R		SE		P		C		A				
McDermott Lake*	25	45				SE				C		P				
McKenzie Lake, Lower	185	17	9	BR	X	DG	P	C	P	C	P	C				
McKenzie Lake, Middle	530	45	20		X	DP	C	C	C	C		C				
McKenzie Springs	3	7		NW		SG							C			
McKinley Lake	105	23	12		X	SE		C		C		A				
McLain Lake	150	30	11	BR	X	SE		C	P	C		A				
Middle Lake (Middle Twin)	21	7		R		SE		C	P	P		C				
Miles Lake	64	19	7		X	SE		C		C		A				
Mill Pond	11	12				SE		P		P		C				
Miller Lake	41	33	7	BR	X	SE		C		C		C				
Minong Flowage (L Nancy)	1,564	21	9	BR	X	DG		C	A	P	P	C				E
Monday Lake	89	25	6		X	SE				C		C				
Moody Lake	49	30				SE		C		A		A				
Mosinee Springs	1	6						P					P			
Mosquito Lake	4	25				SE				C		C				
Mud Lake T38N R10W S31	103	13	7	NW	X	DG		C	P	C		C				
Mud Lake T40N R10W S21	53	4	3	NW	X	SE			P	P		P				
Mud Lake T40N R13W S13	15	17		T		SE						P				
Mud Lake T42N R13W S07	46	4	3		X	SE										
Nancy Lake	772	39	11	BR	X	SE	P	C	C	C	P	A				E
Nice Lake	138	11	6		X	SE				C		C				
Nick Lake	56	79	21	W	X	SE				A		C				
No Mans Lake	70	23	7	BR	X	SE		C		C		A				
Oak Lake T38N R11W S07	33	50				SE		C		A		P				
Oak Lake T41N R13W S19	86	5	4	T	X	SE										
Offers Lake	39	40		T		SE				C		C				
Ole Lake	43	33		T		SE				C		P				
Otter Lake	13	26		T		SE				P		P				
Pavlas Lake	44	45	14	BR	X	SE		C	C	A		C				
Pear Lake	49	32	17	BR	X	SE		C	P	C		P				
Perch Lake	19	15				SE				A		P				
Peters Lake	15	12				SE				P		P				
Peufald Lake No. 1	29	28		R	X	SE				C		P				
Peufald Lake No. 2	7	22		R	X	SE				C		P				
Peufald Lake No. 3	15	32		BR	X	SE				C		P				
Pickereel Lake	5	14		W		SE										
Pine Island Lake	14	35		W		SE				C		C				
Pine Lake	24	12		T		SE				P		P				
Pokegama Lake	453	23	10	BR	X	DG		C	C	C		C				
Pollywog Lake	26	15		W		SE				C		C				
Potato Lake	222	20	11	BR	X	SP		A		C		P				
Rainy Lake	15	11		BR		SE										
Randall Lake	38	6	4	NW	X	SE		C		P		P		P		



**WASHBURN COUNTY**

**continued**

Lake	Area	Maximum Depth	Mean Depth	Public Access	Lake map	Lake Type	Muskie	Northern Pike	Walleye	LM bass	SM bass	Panfish	Trout	Catfish	Sturgeon	Exotic Species
Rappy Lake	14	15				SE				P		P				
Red Lake	41	75	23	T	X	SE		P	P	P		C				
Red Cedar Lake*	1,841	53		BR	X	DG		C	C	C	C	P				
Reflection Lake T38N R10W S04-05	32	7		W		SE						P				
Rice Lake	132	11	5	NW	X	DG		A	P	C		C				
Rigler Lake	10	4				SE										
Ripley Lake (Big Ripley) T37N R12W S04	190	27	10	BR	X	SE		P	C	C		C				
Ripley Lake T38N R11W S19	42	25			X	SE			P	A		C				
River Lake	15	22		T		SE				A		C				
Rock Lake	13	20		W		SE				A		C				
Rocky Ridge Lake	84	16	2	BR	X	DG		A		P		A				
Round Lake T37N R12W S05	28	27				SE				A		P				
Round Lake T37N R12W S18	39	15		W		SE				P		P				
Round Lake T42N R12W S35	17	7				SE										
Sams Lake	16	31		W		SE				C		C				
Sand Lake	198	9	6	BR	X	SE		C		C		C				
Sawmill Lake	15	26		BR		SE		P		P		P	P			
Sawyer Creek Springs	1	11		T		SP							A			
Schullenberger Lake	12	25		T		SE				C		P				
Scout Lake	22	37		T		SE				P		P				
Scovils Lake	66	37	12	BR	X	SE		C	P	C		A				
Severson Lake	29	5				SE										
Seymour Lake	60	12	5	R	X	SE		C		P		P				
Shallow Lake T37N R12W S17	137	10				SE						P				
Shallow Lake T37N R13W S31	92	30		BR		SE		C		C		C				
Shell Lake	2,580	36	23	BR	X	SE	C	P	A	P	A	C				E
Sherman Lake	35	11				SE						A				
Shingle Camp Lake	19	11		W		SE										
Silver Lake	188	28	10	BR	X	SE		C	P	A		A				
Sleepy Eye Lake	39	10	7	BR	X	SE		C		C		C				
Slim Creek Flowage	101	27	6	BR	X	DG		A		P		A				
Slim Lake	224	42	22	BF	X	DG		P	P	C	P	A				
Snag Lake	23	10				SE				P		P				
Spider Lk No. 1 T37N R10W S02	41	62	25	W	X	SE		C	P	C		C				
Spider Lk No. 2 T37N R10W S02	6	20	8	W	X	SE		C		C		P				
Spider Lk No. 3 T37N R10W S03	20	20	8	W	X	SE		C		C		P				

**WASHBURN COUNTY**

**continued**

Lake	Area	Maximum Depth	Mean Depth	Public Access	Lake map	Lake Type	Muskie	Northern Pike	Walleye	LM bass	SM bass	Panfish	Trout	Catfish	Sturgeon	Exotic Species
Spider Lk No. 4 T37N R10W S03	24	30	9	W	X	SE		C	C			P				
Spider Lk No. 5 T37N R10W S10	177	49	13	BR	X	SE		P	P	P		C				
Spooner Lake	1,092	17	7	BR	X	DG		A	P	C		A				
Sport Lake	23	11				SE				P		A				
Spring Creek Springs	2	1		T		SP		P					P			
Spring Lake T39N R10W S36	42	13		BR	X	SE			C	C		C				
Spring Lake T39N R11W S07	27	6		NW		SP		C	C	C	P	C				
Spring Lake T40N R11W S25	211	24	12	BR	X	SE		C	C	C		C				
Spring Lake T40N R13W S33	23	24		NW		SP		C	C	C		C				
Spring Lake T42N R13W S17	54	8	2	BR	X	SP		C		P		C				
Spute Lake	13	54				SE				C				A		
Stanberry Lake	35	7		W		SE										
Star Lake	22	13				SE						P				
Starkey Lake	22	6				SE			C			C				
Stauffer Lake	42	10		W		SE										
Stone Lake T38N R11W S31	39	9				SE										
Stone Lake T39N R10W S24	523	49	33	BR	X	SE		P	A	C	A	C				
Sugar Bush Lake T41N R10W S17	52	20				DG		P		P		P				
Sugarbush Lake T37N R10W S14	30	18				SE				P		P				
Sunfish Lake (Daisy)	68	33	11	BR	X	SE		P		A		P				
Superior Lake	35	22		T	X	SE				A		C				
Taylor Lake (Cranberry)	11	8	7	BR	X	SE						P				
Telstar Lake (Block)	20	25		W		SE				C		P				
Tomahawk Lake	24	36			X	SE		P		C		A				
Tony Lake	15	1				SP		P				P	P			
Totagatic Flowage	479	12	3	BR	X	DG		C	P	C		P				
Tower Lake	7	21				SE				P		P				
Tozer Lake	36	46	18	BR	X	SE		P	C	C		C	P			
Tozer Springs	1	6	2			SP		P					P			
Tranus Lake	175	12	3	BR	X	DG		C		C		P				
Trego Lake	451	36	11	BR	X	DG	P	C	C	C	C	A				P
Trego Pond	1	5		BR		SE						P				
Tucker Lake	26	7				SE										
Twin Lake, East	15	37		NW		DG		P		C		C				
Twin Lake, North (Twin Lakes)	113	20	6	BR	X	SE		C	P	C		A				
Twin Lake, South (Twin Lakes)	115	29	16	BR	X	SE		C	C	C		A				
Twin Lake, West	8	44		NW		DG		P		A		C				
Unnamed T37N R10W S09-04A	33	35				SE				P		P				
T37N R10W S09-14	24	27				SE				A		C				

**WASHBURN COUNTY**

**continued**

Lake	Area	Maximum Depth	Mean Depth	Public Access	Lake map	Lake Type	Muskie	Northern Pike	Walleye	LM bass	SM bass	Panfish	Trout	Catfish	Sturgeon	Exotic Species
T37N R10W S33-02	41	11		W		SE				P		P				
T37N R10W S33-14	25	8				SE				P		P				
T37N R11W S03-06	30	5				SE										
T37N R13W S18-09	20	16		R		SE		P		C		P				
T37N R13W S31-14	21	15				SE										
T37N R13W S32-02	22	6		R		SE										
T38N R10W S08-02	24	24		W		SE				P		P				
T38N R10W S13-12	29	38		W		SE				P		P				
T38N R10W S14-02C	25	22				SE				P		P				
T38N R10W S30-15	28	14				SE				P		P				
T38N R11W S34-03	30	9				SE		P		P		P				
T38N R12W S15-15	73	12				DG						P				
T38N R12W S36-12	23	17				SE				P		C				
T39N R10W S27-06	30	35				SE				A		A				
T39N R11W S11-13	35	4				SE										
T39N R12W S05-04	22	6				SE										
T39N R12W S08-04	23	3		R		SE										
T39N R13W S32-14	29	8		R		SE										
T40N R12W S03-08	20	12				SE				C		C				
T40N R12W S17-08	22	8		R		DG		P		P		C				
T41N R10W S22-05	40	4				SE										
T41N R10W S23-05	27	7		W		SE										
T41N R10W S35-04	37	6		W		SE										
T41N R12W S12-02	22	4				SE										
T41N R12W S30-04	24	5				SE										
T41N R13W S15-07	45	15				SE				C		C				
T41N R13W S23-04	21	6				SE										
T42N R12W S06-12	87	7		R		SE										
T42N R12W S06-13	21	7		W		SE										
T42N R13W S19-08	39	17				SE										
Veazie Springs	2	4		NW		SP		P			P	P	P			
Vollmers Lake	17	29		W		SE				P		P	P			
Warner Lake	21	22	8			SE		P		A		A				
Watson Lake	32	14				SE				A		P				
Welsh Lake	69	8	3	T		SE						P				
West Lake	32	27		T		SE				C		P				
Westenberg Spring	3	11		NW		SP		P					P			
Whalen Lake	84	20	13	BR	X	DG		C		C		C				
Whalen Springs	1	7		T		SP							C			
Wilcox Lake	23	7				SE										
Wilcox Lake, East	31	12	6	R	X	SE				C		P				
Wilcox Lake, West	24	8	4		X	SE						P				
Wilkerson Lake	86	8	4		X	SE		P				P				
Wolf Lake	35	43		BR	X	SE		P		C		C				

**WASHBURN COUNTY**

continued

Lake	Area	Maximum Depth	Mean Depth	Public Access	Lake map	Lake Type	Muskie	Northern Pike	Walleye	LM bass	SM bass	Panfish	Trout	Catfish	Sturgeon	Exotic Species
Yechout Lake	56	25	8		X	SE	P	P	C		C					
Yellow River Flowage	344	17	2	BR,P	X	DG	P	A	P	C	C					
<b>WASHINGTON COUNTY</b>																
Allis Lake (Leinberger)	9	34				SE		P		P	P	A				
Amy Bell Lake (Amy Dell)	26	37	20		X	SE		C	C	A		A				
Bark Lake	62	34	14		X	SP		C	P	C		C				E
Barton Pond	67	5	3	T	X	DG		C		P		C				
Beck Lake	16	8				SE		C		P		C				
Big Cedar Lake	932	105	34	BF	X	SP		C	P	A		C				EZ
Boltonville Millpond	10	10	5		X			P		P		C	P			
Brickyard Lake	1	4				SE				P		P				
Druid Lake	120	53	25	BR	X	DG		P	P	P		A				
Ehne Lake	18	15	5		X	SP				P		C				
Erler Lake	37	34	14		X	SP				C		C				E
Five,Lake	102	23			X	SE		P		C		P				E
Friess Lake (Fries)	117	48	27	NW	X	DG		P	P	C		P				E
Gilbert Lake	44	30	3	NW	X	SP		C		C		C				E
Green Lake	71	37	17	BR	X	SE		P	P	C		C				E
Hartford Millpond	11	8		T		DG		P		P		P	P			
Hasmer Lake	15	34	17	T	X	DG		C		A		P				
Hawthorn Lake	8	12				SE				P		P				
Hickey Lake	10	14				SE				C		C				
Keowns Pond	1	15				DG				P		P	P			
Kewaskum Millpond	5	8		T		DG		P		P		P				
Kohlsville Millpond	6	7		R		DG				C		A				
Lehner Lake	3	22	15		X	SP				C		A	P			
Lenwood Lake (Benike)	15	38	19		X	SP		P		C		P				
Little Cedar Lake	246	56	13	NW	X	DG		P	C	A		C				EZ
Little Drickens Lake	9	20				SE		P		P		P				
Little Friess Lake (Bony)	15	34	16	NW	X	DG		P	P	C		P				
Lohr Pond	7	8				SE				P		P				
Lowes Lake (Lowe)	23	23	11	NW	X	DG		P		P		C				E
Lucas Lake	78	15	6		X	DG		P		P		P				E
Malloy Lake	5	24				SP		P		P		P				
McConville Lake	14	37		NW		SE		P		C		A				
Miller Lake	3	16				SE				P		P				
Mud Lake T09N R19E S24	5	10	3		X	SE										
Mud Lake T10N R19E S19	23	5				SE										
Mueller Lake (Millers)	14	33	15		X	SP		P		P		P				
Murphy Lake	16	37		NW		SE		P		C		A				
Newburg Pond	7	8		T		DG		P		P		P				

# Get In Tune . . . To Your Lake

A lake is much more than an individual body of water—it's a reflection of how we use the surrounding land. What you do to the landscape directly affects the water quality of lakes and can heighten such problems as unsightly algae blooms, nuisance weeds, siltation, reduction of wildlife habitat, and loss of natural shoreline.

Here are some helpful tips on how to keep your lake clean and healthy. Whether you're a lake user or lake-front property owner, *be aware of your actions* and help keep Wisconsin's 15,000 blue jewels blue!

## Please Don't Feed the Lake!

After a hard rain, check out what's washing into the nearest lake. Nearby farms, construction sites, houses, gardens and lawns add nutrients and sediments, contributing to excessive algae and plant growth. Simply put, what feeds your own crops, lawns, and gardens *also* overfeeds the lake's greenery!

What you do to your land tends to show up in a lake. Follow these simple steps to slow water runoff and minimize nutrient overloading:

- Maintain vegetation on steep hills and banks, or terrace steep slopes
- Leave a natural vegetation buffer zone near your lakeshore
- Do you really need to fertilize your lawn? If so, apply only what is recommended through soil testing
- Remove cut aquatic plants and dead fish from lakeshore
- Use compost from lawn clippings or harvested aquatic plants to fertilize gardens and flowers
- Don't burn lawn wastes or sweep the leaves and lawn clippings into street gutters
- Direct runoff from rooftop downspouts to areas where it can soak into the soil
- Minimize paved and impermeable surfaces
- Minimize soil disturbance during construction and revegetate bare areas as soon as possible

## Flushing Your Lake's Future?

The simple flush of a toilet or rush down a gutter can dump something into our lakes. Storm sewers are *not* safe disposal sites—water running into the sewers flushes oil, grease, garbage, animal and yard waste, chemicals, pesticides, toxic metals, salts, and sediments directly into the lake. Overburdened septic systems leak nutrient-rich pollutants into lakes, too.

Take notice of your wastes—what they are, where they're going, and how to safely dispose of them:

- Treat household cleaners, solvents and pesticides as hazardous waste. **Don't** dump these toxins into the storm sewer—keep abreast of changing disposal practices and learn to discard contaminants properly!
- Recycle motor oil and other acceptable automotive wastes
- Encourage local street sweeping
- Reduce or eliminate pesticide use on your lawn and garden
- Pick up animal waste and bag for pick-up and proper disposal
- Compost yard waste for your garden
- Maintain septic systems (pump regularly); make sure all gray water drains to your septic system, and never dump wastewater directly into the lake
- **Be Water Wise:** conserve water and less wastewater will reach the lakes

## Where Have All the Wetlands Gone?

Since most prime lakeshore property is already developed, pressure mounts to develop “marginal shorelands” or wetlands. Wetlands play a crucial role in the overall health of a lake, filtering out pollutants and sediments, acting as natural barriers against shore erosion, and providing food, cover and nursery areas for a variety of fish and wildlife.

To function effectively, a wetland needs an undisturbed, stable environment. Here's what you can do to help:

- Eliminate filling, dredging, draining or altering wetlands and weedbeds
- Protect beneficial or unique fish and wildlife habitats
- Control erosion into wetland areas—sediments not only reduce the life expectancy of wetlands, but often contain toxins or can cover and suffocate plants and fish eggs
- Avoid using motorboats and jet skis in shallow areas to prevent stirring sediments. Check into local boating control ordinances to further prevent overcrowding and sediment problems
- A lake is not a swimming pool! Aquatic plants and algae are crucial to the health of the lake. Learn which lake plants are most beneficial to fish and wildlife
- Work toward the control of non-native nuisance plants such as purple loosestrife, curlyleaf pondweed and Eurasian milfoil
- Consider alternatives to chemical spraying of excessive lake plants (hand harvesting, raking, cutting, aquatic plant screens, and mechanical harvesting, or leaving them alone)
- To chemically treat lake plants, remember—you **do** need a DNR permit. Contact your local DNR lake biologist for the best plant control method to suit your lake
- Fight zoning changes that would promote development of wetland areas; attend zoning hearings, contact your Board of Adjustment

- Become a shoreland/wetland steward; make sure any development on or near wetlands is properly permitted

## How's Your Lakeshore Looking?

Thoreau called a lake “the landscape’s most beautiful and expressive feature.” While piers, decks and cabins may help you enjoy your lake, shoreline development can obscure its natural beauty, masking the landscape’s expression. Be aware of state and local shoreland zoning regulations designed to help keep the landscape in harmony with the natural lakeshore, and keep Wisconsin’s most expressive feature beautiful:

- Maintain and restore natural vegetation strips along the shoreline, not only to enhance the lake’s beauty, but to provide cover and shade for fish, wildlife and people—also increasing privacy, reducing runoff and noise
- Logs and branches make great aquatic habitat. Resist the urge to “tidy-up” when a storm leaves woody debris along the shoreline
- Contact your zoning office before you begin any construction activity on or near your shoreline
- All structures, including decks, must be set back 75 feet from the shoreline
- Follow standards for shoreline cutting, lot size, sanitation, and construction
- Design structures to complement the landscape. Use natural colors and build only what you need
- Try natural-looking rock or boulder rip-rap, instead of sea walls and sheet piles, to prevent shoreline erosion or better yet, protect natural vegetation
- Learn who your local zoning officials are and participate in Board of Adjustment hearings: **You can make a difference!**

## Got the Blues 'Cause Your Lake is Green?

There are no simple solutions to complex lake problems, but you **can** help. Your daily use of the lake and its surrounding landscape contributes greatly to lake water quality. Any action you take to improve the lake will likely trigger others to join in the effort.

We must learn to live in tune to our lakes. Take a stake in your lake—and help keep Wisconsin’s 15,000 most expressive features looking healthy, beautiful... and blue.

## s Exotic Species —

### Please don't let them hitch a ride with you!

Exotic species are plants and animals not native to Wisconsin. Some exotic fish species were intentionally introduced in the late 1800s to enhance sport fishing opportunities, but yielded mixed results. For example, the steelhead (migratory rainbow trout) fishery provides anglers with an exciting challenge on Wisconsin's Great Lakes. Carp, however, wreak havoc on spawning sites for many game fish and are no longer welcome or stocked.

Once introduced into a new environment, many exotics are capable of causing major disruptions to natural communities. More recent accidental newcomers like the zebra mussels, Eurasian water milfoil, the ruffe, and spiny water fleas are very destructive and aggressive aquatic invaders that are a cause for concern. These pests are easily transported by unsuspecting people via boats and fishing gear. Once established, these exotics rarely can be eradicated.

**It only takes one careless boater to infest a lake or river. Help prevent the spread of harmful, exotic plants and animals by taking the following precautions when transferring your boat.:**

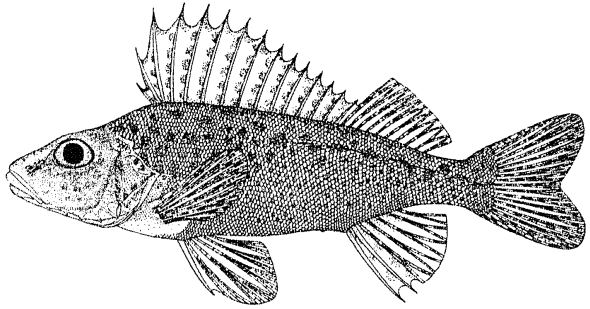
- **Remove** aquatic plants and animals from all parts of your boat, trailer and accessory equipment. Dispose of the removed material in the garbage either at the water access area (if cans are available) or at home.
- **Drain** all water from your boat including your bilges, live wells and other containers *before* leaving the water access area.
- **Do not transfer water** from one water body to another or release live bait or aquarium pets into any waters.
- **Wash** your boat and trailer thoroughly with regular tap water when you get home. Flush water through your motor's cooling system, live wells and other areas that hold water. (Preferably, dry your boat and equipment for 3 days in a sunny location before transferring it to a new body of water.)

By working together we may be able to protect our waters from unwelcome aquatic invaders. **Remember... Clean boats - Clean waters!**

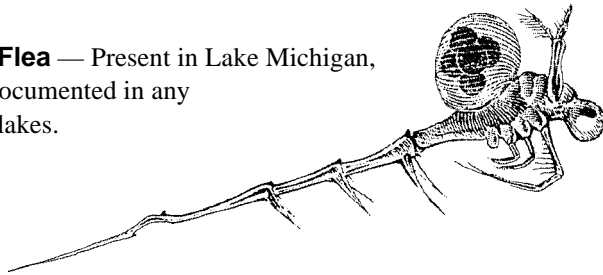


## Status of Exotic Species in Wisconsin:

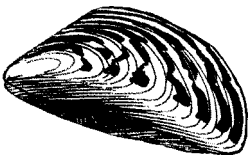
**Ruffe** — Present on Lake Superior only from the Duluth/Superior Harbor east to the Ontonagon River in Michigan. No sightings on any inland Wisconsin waters or other Great Lakes.



**Spiny Water Flea** — Present in Lake Michigan, but has not been documented in any inland Wisconsin lakes.



**Zebra Mussels** — Present in lakes Michigan and Superior and the Mississippi River system south of Lock and Dam #1. Zebra mussels have also been documented in the following inland lakes in Wisconsin: Elkhart Lake in Sheboygan County, Silver Lake in Kenosha County, Okauchee Lake in Waukesha County and the Racine Quarry in Racine County.



## Eurasian Water Milfoil —



## DNR Service Centers

Office hours are 7:45 a.m. to 4:30 p.m. Monday-Friday

### South Central Region

Dodgeville .....	608-935-3368
Fitchburg .....	608-275-3266
Horicon .....	920-387-7860
Janesville .....	608-743-4800
Madison .....	608-266-2621
Poynette .....	608-635-8110

### Southeast Region (Milwaukee) .....

414-263-8500	
Hartford (Pike Lake) .....	262-670-3400
Kettle Moraine State Forest (South) .....	414-594-6200
Plymouth .....	920-892-8756
Sturtevant .....	262-884-2300

### Northeast Region (Green Bay) .....

920-492-5800	
Oshkosh .....	920-424-3050
Peshtigo .....	715-582-5000
Sturgeon Bay .....	920-746-2860

### West Central Region (Eau Claire) .....

715-839-3700	
Baldwin .....	715-684-2914
Black River Falls .....	715-284-1400
La Crosse .....	608-785-9000
Wausau .....	715-359-4522
Wisconsin Rapids .....	715-421-7800

### Northern Region

Antigo .....	715-627-4317
<b>Cumberland .....</b>	<b>715-822-3590</b>
Park Falls .....	715-762-3204
Rhineland .....	715-365-8900
<b>Spooner .....</b>	<b>715-635-2101</b>
Superior .....	715-392-7988
Woodruff .....	715-356-5211



General mailing address:  
Department of Natural Resources,  
Box 7921, Madison, WI 53707-7921  
Phone: 608-266-2621.

Visit our website at:  
<http://dnr.wi.gov>

Source of this "Cover PDF" is "Wisconsin Lakes"  
A copyrighted book from the Wisconsin Dept. of Natural  
Resources... It can be found in parts at:

<http://dnr.wi.gov/org/water/fhp/lakes/list/#lakebook>

This part is the cover.pdf:

- [Cover](#) - Adobe Acrobat (PDF) Format (393 K)
- [Lakes1a](#) Lake Information, Terms and Key - Adobe Acrobat (PDF) Format (227 K)
- [A-C County names\(Adams-Crawford\)](#) first letter tables of Named Lakes - Adobe Acrobat (PDF) Format (845 K)
- [D-J](#) - (Dane-Juneau) Adobe Acrobat (PDF) Format (224 K)
- [K-M](#) - (Kenosha-Monroe) Adobe Acrobat (PDF) Format (240 K)
- [O-P](#) - (Oconto-Price) Adobe Acrobat (PDF) Format (497 K)
- [R-V](#) - (Racine-Vilas) Adobe Acrobat (PDF) Format(507 K)
- [W](#) - (Walworth-Wood) Adobe Acrobat (PDF) Format (438 K)
- [Lakes2](#) Lake Practices and Exotics - Adobe Acrobat (PDF) Format (423 K)

**All County Tables A-W** - (Adams-Wood) Adobe Acrobat (PDF) Format (1838 K)

If you use this information please identify the "Wisconsin  
Lake" book as the source.

For Comments or Questions please contact James Vennie  
608-266-2212 or [James.Vennieiii@wisconsin.gov](mailto:James.Vennieiii@wisconsin.gov)